



BOSCH



BITURBO
BRUSHLESS
REVOLUTIONARY
PERFORMANCE.

POWER TOOLS CATALOGUE 2021

1st Edition September 2021

CONTENTS

Heavy Duty	P3	Jigsaw	P25
Freedom Concept	P4 - 5	Cut off Machine	P25
Download BeConnected	P6	Table Saw	P25
BeConnected App	P7	Compound Mitre Saw	P25
BITURBO BRUSHLESS	P8 - 11	Mitre Saw Stand	P25
ProCORE 18V	P12	Table Saw Stand	P25
NEW! 18V BITURBO BRUSHLESS	P13	Planer	P25 - 26
3.6 V Li-Ion, 12 V Li-Ion	P14	Foam Cutter	P26
12 V Li-Ion	P15	Eccentric Sander	P26
18 V Li-Ion	P16 - 17	Orbital Sander	P26
36 V Li-Ion	P17	Polisher	P26
12 V Battery Pack	P17	Blower	P26
18 V Battery Pack	P18	Belt Sander	P27
ProCore 18 V	P18	Hot Air Gun	P27
36 V Battery Pack	P18	Mini Router / Trimmer	P27
Charger	P18	Wet & Dry Vacuum Cleaner	P27
L-BOXX	P18	Dust Free Solution	P28
12 V / 18 V Starter Kit	P18	Cordless Optical Scope	P29
Drill	P18 - 19	Laser Rangefinder	P29
Impact Drill	P19	Detector	P29 - 30
Multi-Cutter	P19	Thermo Detector	P30
Rotary Hammer	P19 - 20	Line Laser	P30
Rotary Hammer with SDS-Max	P20	Point Laser	P31
Magnetic Drill Stand	P20	Electronic Line Laser	P31
Dust Extractor	P20 - 21	Combi Laser	P31
Demolition Hammer	P21	Rotation Laser Level	P31
Straight Grinder	P21 - 22	Angle Measurer	P31
Angle Grinder	P22 - 23	Digital Inclinometer	P31
Impact Wrench	P23	Tripod	P31 - 32
Stirrer / Mixer Drill	P24	Measuring Rail	P32
Shear	P24	Telescopic Pole	P32
Bench Grinder	P24	Laser Receiver	P32
Marble Cutter	P24	Rotation Mount	P32
Nibbler	P24	Universal Holder	P32
Circular Saw	P24	High Pressure Washer (Suitable for Home Use)	P33
Drywell Screwdriver	P24	High Pressure Cleaner (Suitable for Industrial Use)	P33
Sabre Saw	P24	Bosch 110V Power Tools	P34
Reciprocating Saw	P24	Carbon Brush Guidelines	P35
Diamond Wheel Cutter	P24	Warranty	P36
Dry Cutter	P25	Notes	P37 - 39

All tools comes with **Full Warranty#!**

Includes Wear & Tear Parts! **FREE** Repair Costs!!

**HEAVY
DUTY**

**1 year
warranty**

Bosch Heavy Duty Power Tools are entitled to **1 year Full Warranty**, excluding batteries and chargers which are entitled to 6 months warranty. Full Warranty is exclusively **available at Powerwell Service Centre only**.

Bosch reserves the right to amend the terms & conditions or withdraw the promotion at its sole discretion without prior notice.

CORDLESS HEAVY DUTY MODELS

GAS 12 V-LI (Bare Unit Only)	GDX 18 V-LI (Bare Unit Only)	GSR 12-2-LI
GAS 18 V-1 (Bare Unit Only)	GGG 18 V-LI (Bare Unit Only)	GSR 12-15 FC
GAS 18 V-10 L (Bare Unit Only)	GKM 18 V-LI (Bare Unit Only)	GSR 14.4-2-LI
GBH 36 V-LI Plus	GKS 12 V-LI (Bare Unit Only)	GSR 18 V-EC
GBH 36 V-EC Compact	GKS 18 V-LI (Bare Unit Only)	GSR 18 V 50
GBH 18 V-EC	GOP 18 V-28 (Bare Unit Only)	GSR 36 VE-2-LI
GBH 18 V-26 (Bare Unit Only)	GSA 12 V-LI (Bare Unit Only)	GSS 18 V-LI (Bare Unit Only)
GBH 18 V-26 + GDE 18 V-16	GSA 18 V-32 (Bare Unit Only)	GST 12 V-LI (Bare Unit Only)
GBL 18 V-120 (Bare Unit Only)	GSA 36 V-LI	GST 18 V-LI (Bare Unit Only)
GCB 18 V-LI (Bare Unit Only)	GSB 12 V-30	GUS 12 V-LI
GDR 12 V-EC	GSB 18 V-EC (Bare Unit Only)	GWS 12-76 V-EC (Bare Unit Only)
GDR 12-LI	GSB 18-2-LI	GWS 18 V-LI (Bare Unit Only)
GDS 18 V-EC	GSB 18 V 50	GWS 18 V-10
GDS 18 V-LI HT	GSR 12 V-30	
GDX 18 V-EC	GSR 12 V-EC	

CORDED HEAVY DUTY MODELS

GAS 12-125 L	GCM 10 S	GSH 11 VC
GAS 15 / 15 PS	GCO 14-24 J (Soft Start)	GSH 16-30
GBG 35-15	GCO 2000 (Only available in 110V)	GSH 27 VC
GBG 60-20	GDM 13-34 (Also available in 110V)	GSH 5 (SDS MAX)
GBH 2-23 REA	GDS 18 E (Also available in 110V)	GSH 5 CE
GBH 2-24 RE / DRE	GDS 30	GSH 9 VC
GBH 2-26 DFR	GEX 125-1 AE	GSS 280 AE
GBH 2-26 DRE	GGG 28 C	GSS 280 AVE (Indent)
GBH 2-26 RE (Also available in 110V)	GGG 28 LC (Also available in 110V)	GST 25 M (Also available in 110V)
GBH 2-28 DFV	GGG 6 S	GST 80 PBE
GBH 3-28 DFR	GHO 10-82 (Also available in 110V)	GTS 10 J
GBH 4-32 DFR	GHG 18-60	GWS 750-100
GBH 5-40 D (Also available in 110V)	GHG 20-63 Kit	GWS 9-100 P
GBH 8-45 D (Also available in 110V)	GMR 1	GWS 900-100
GBL 800 E (Also available in 110V)	GNA 2.0	GWS 900-100 S
GBL 82-270	GPO 12 CE	GWS 11-125 P
GBM 10 RE	GOP 30-28	GWS 12-125 CI (Only available in 110V)
GBM 13 HRE 'High Torque'	GRW 12 E	GWS 13-125 CI
GBM 13 RE	GSA 1100 E (Also available in 110V)	GWS 14-125
GBM 16-2 RE	GSA 120	GWS 17-125 CI
GBM 23-2 E	GSB 13 RE	GWS 17-150 CI
GBM 32-4	GSB 16 RE (Also available in 110V)	GWS 18-125 L
GBS 75 A	GSB 20-2 RE	GWS 18-150 L
GBM 50-2	GSB 21-2 RCT	GWS 20-180 (Also available in 110V)
GCD 12 JL	GSC 2.8	GWS 20-230
GCM 10 MX	GSG 300	
GCM 12 GDL	GSH 11 E	

* Bosch Heavy Duty Power Tools are entitled to 1-year warranty, except for hot air guns, batteries and chargers which are entitled to 6-months warranty.



The Freedom Concept

The freedom concept provides the freedom to choose cordless tools, batteries, chargers, and carrying cases exactly according to your needs. You are now free to choose.



Bosch Lithium-Ion Cordless Tools Range

3,6 Volt	
pocketseries	
 GSR ProDrive	 Bosch Go 2
The World's smallest professional screwdriver	Ready as ever. Better than ever
Battery Pack	
Charger	
Starter Kit	
L-BOXX	

12 Volt		
compactseries		
 GSR 120-LI	 GKS 12 V-LI	 GOP 12 V-28
 GST 12 V-LI	 GAS 12 V-LI	 GDR 12-LI
 GSB 120	 GDR 12 V-EC	 GSA 12 V-LI
 GSR 12 V-30	 GSR 12 V-EC	
 12V, 2.0 Ah	 12V, 2.5 Ah	
 GAL 1240 (For 10.8V & 12V)		
 12V 1.5 Ah (2 Batteries) + GAL 1240 (1 Charger)		
 L-BOXX 102		

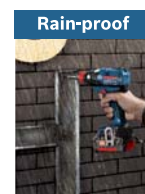
INNOVATIVE BOSCH CORDLESS TECHNOLOGY



Kick Back Stop detects sudden movements and stop tool rotation



ETP protects your tool from Rain & Dust



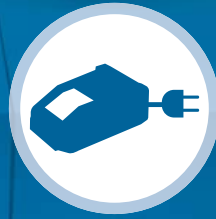
CHOOSE YOUR OWN COMBINATION



BARE TOOLS



BATTERIES



CHARGERS



L-BOXX

18 Volt			
lightseries	robustseries		
Extremely lightweight	Extremely robust		

36 Volt
superseries
As powerful as corded

2.0 Ah	4.0 Ah	6.0 Ah	
AL 1860 CV			
AL 1840 CV + 2 Batteries (2.0 Ah 18V)	AL 1840 CV + 2 Batteries (4.0 Ah 18V)	GAL 1830 CV + 1 Battery (2.0 Ah 18V)	
L-BOXX 102	L-BOXX 136	L-BOXX 238	L-BOXX 374

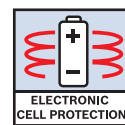
2.0 Ah	6.0 Ah
AL 3680 CV	



EMP protects the motor against overload and automatically shuts it down in case of stalling



2 X Lifetime
up to 30% more runtime



ECP prevents your battery from deep discharge, overheating, overload

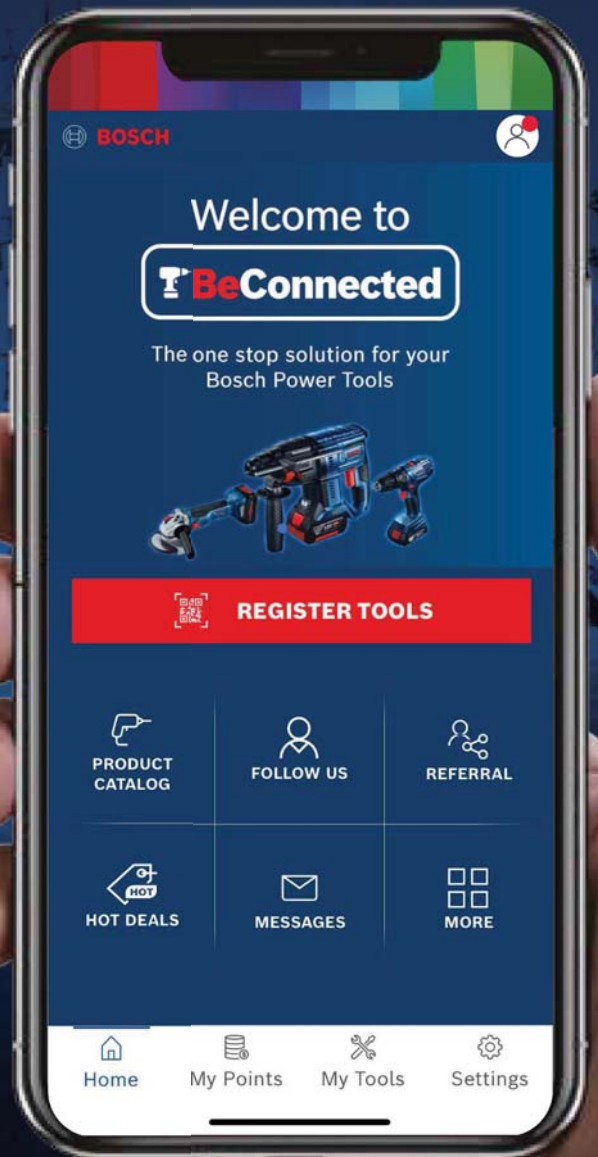


EC Brushless Motor
No brush sparking due to electrical switch by electronics

DC Motor
Brush sparking at every mechanical switch operation



Download Now!
Join BeConnected
To Get Your
Rewards Today!



SCAN ME!
扫描我!



What is BeConnected App?

Welcome to **Bosch BeConnected!** – a power-packed digital app that enables you to check on our Hot Deals, make purchases, and earn points to redeem for great rewards. Other great user-friendly features include e-warranty, product catalogue, dealers and service centres locator, instant messaging, etc. Read on to discover how to enjoy a better digital lifestyle with **Bosch BeConnected** and download the App today!

BeConnected App Features



Product Catalog

Find genuine product information, video & reviews at your convenience.



Messages

Get alerts on notification here.



Follow Us

Stay in touch with us on Facebook, Instagram, Website or contact us on our hotline.



My Points

Check total points, points used and balance points.



Referral

Invite your friends via Facebook, SMS or link to be part of BOSCH BeConnected community by downloading the app.



My Tools

Check products history and track purchase history.



Hot Deals

Check out the latest promotion and the Best Buys !



Redeem Gifts

Check gifts catalogue and redeem your favorite gifts with your points! You can check redeem history too.

How to download BeConnected App?

Step 1



Go to



or



Step 2



Type

Bosch
BeConnected

Step 3

Select



For User



For Business

Step 4



Click

Download
App



BOSCH



REVOLUTIONARY PERFORMANCE. FEEL THE EXTREME.

BITURBO
BRUSHLESS

BITURBO TOOLS SET NEW STANDARDS IN PERFORMANCE WITH LESS WEIGHT AND MAXIMUM OOMPH.

Maximum Power | Maximum output in combination with ProCORE18V batteries. Up to 1,800 watts of corded power.

Perfect handling | BITURBO tools are lightweight, compact and impress with perfect ergonomics. With just one ProCORE18V battery, they perform as well as competitor Tools with two batteries.

Ultimate control | Multiple clever technologies make your work safer, faster and more efficient.

Fully compatible | Compatible with all new and existing Batteries and chargers from the Professional 18V System. For maximum power, use ProCORE18V 8.0 or 12.0 Ah batteries.

New high-performance motor



Our most powerful battery ever

BITURBO Brushless: Up to 1,800 watts of corded power.

BITURBO IS ENGINEERED FOR HIGHEST PERFORMANCE AMONGST 18V SYSTEM

The Professional 18V System combines highest performance with compact dimensions and minimum weight to make your toughest jobs easier. Benefit from the ultimate in performance, uncompromising compatibility and maximum freedom on your job site.

+87%¹ MORE POWER

ProCORE18V: latest cell technology and intelligent battery management.



Up to +135%² LONGER LIFETIME

COOLPACK 2.0 technology: prevents the battery from overheating.

Up to +151%³ EXTENDED RUNTIME

Excellent battery performance: When other batteries switch off, you just keep working.



**PERFECTLY
ENGINEERED FOR HIGHEST
PERFORMANCE.**

9 min to 50%⁴ FASTEST CHARGING

Get back to work faster than ever thanks to the world charging champion GAL 18V-160 C Professional.





BOSCH

BITURBO
BRUSHLESS

BITURBO TOOLS NOW EVEN BETTER THAN CORDED

GWS 18V-15 SC

50% STRONGER

than all our previous cordless angle grinders.¹

255 CUTS

with one battery charge in 12mm-thick rebar.



OUTPERFORMS CORDED

thanks to extremely high grinding speed.¹

GBH 18V-45 C

CORDED PERFORMANCE

with 12.5 J impact energy.³



THE LIGHTEST

tool of its class.²

BEST DRILLING DISTANCE

in its class: 4.27m with just one charge.⁴

GBH 18V-34 CF

UNPARALLELED DRILLING SPEED

at diameter 25mm.⁶



THE MOST POWERFUL

cordless SDS-plus hammer on the market.⁵

OUTSTANDING TOOL CONTROL

thanks to Soft Start, Kick-Back Control and 3 different working modes.

GKS 18V-68 GC

FASTER AND LIGHTER

than our corded tools.⁷

WITH JUST ONE BATTERY

our tool performs as well as competitor tools with two batteries or higher voltage classes.⁸



UP TO 1,800 WATTS

of corded power – our most powerful cordless saw.

EXPERIENCE A NEW WAY OF WORKING WITH BITURBO TOOLS AND APP

Connect BITURBO Tools with App for Maximum Efficiency & Customization



Compatible with iOS and Android



GCY 42 installed on tool for tool to connect to APP



Bosch ToolBox APP

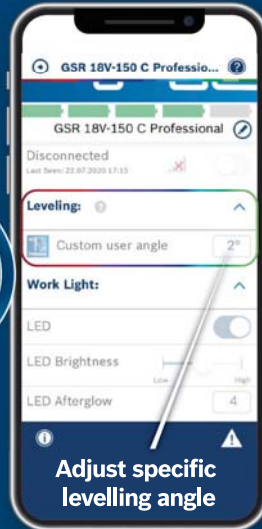


Connected tools can be found in My Tools within Bosch Toolbox APP

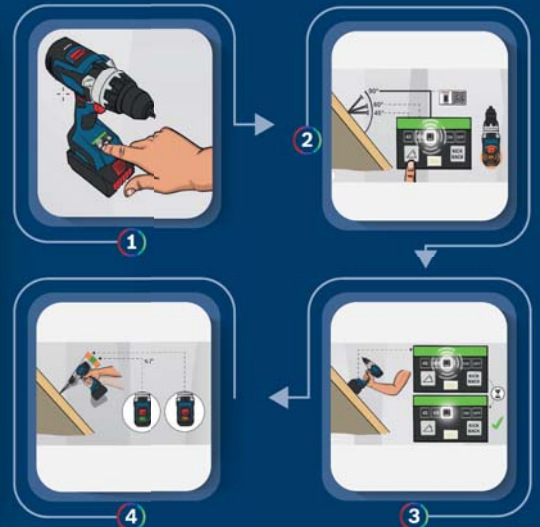
World's First Levelling Function



GSR/B 18V-150 C



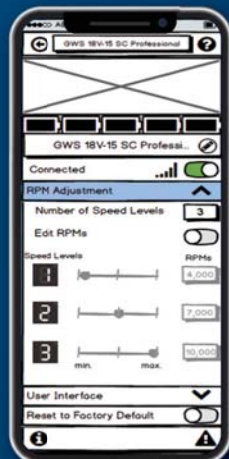
Adjust specific levelling angle



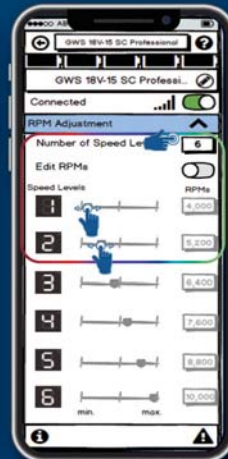
Personalized Speed Levels



GCM 18V-305 GDC



Default Setting



Personalized Setting



A new dimension of power

It's in your hands. Bosch Professional.

Pro **CORE** 18V

8.0Ah

Pro **CORE** 18V

4.0Ah

Pro **CORE** 18V

12.0Ah

+87%

more power¹

Thanks to the latest cell technology and intelligent battery management.

+135%

longer lifetime²

COOLPACK 2.0 technology prevents the battery from overheating.

100%

compatible

Fits all Bosch Professional 18V power tools and chargers – both existing and new.

ProCORE18V 4.0Ah

All the power of a standard battery - not its weight.

ProCORE18V 8.0Ah

The perfect balance between weight and power - with up to 1,600W corded power.

ProCORE18V 12.0Ah

Maximum performance and runtime.

.....

When other batteries cannot handle the heat and switch off, ProCORE18V powers through.



+30%

Removes more material in 2 minutes.



+70%

More holes per charge.



+151%

More holes per charge.

NEW! 18 V BITURBO BRUSHLESS

GDS 18 V-1050 H (Bare Unit Only) Cordless Impact Wrench

HEAVY DUTY

1 year warranty



Capacity

No-load Speed	: 0 - 1750 Nm
Max. Torque (1st/2nd/3rd level)	: 350/750/1050 Nm
Max. Breakaway Torque:	1700 Nm
Battery Voltage	: 18 V
Impact Rate	: 0 - 2,600 bpm

GBR 18 V-150 C (Bare Unit Only) Cordless Drill/Driver

HEAVY DUTY

1 year warranty



Capacity

No-load Speed (1st gear)	: 0 - 550 rpm
(2nd gear)	: 0 - 2,200 rpm
Torque (soft/hard/max.)	: 84/100/150 Nm
Chuck Capacity min/max	: 1.5 / 13 mm
Torque Settings	: 25 + 1
Battery Voltage	: 18 V
Weight excl. battery	: 2.1 kg

GSB 18 V-150 C (Bare Unit Only) Cordless Combi

HEAVY DUTY

1 year warranty



Capacity

No-load Speed (1st gear)	: 0 - 550 rpm
(2nd gear)	: 0 - 2,200 rpm
Torque (soft/hard/max.)	: 84/100/150 Nm
Chuck Capacity min/max	: 1.5 / 13 mm
Torque Settings	: 25 + 1
Battery Voltage	: 18 V
Weight excl. battery	: 2.2 kg

GBH 18 V-34 CF (Bare Unit Only) Cordless Rotary Hammer

HEAVY DUTY

1 year warranty



Capacity

No-load Speed	: 500 min.-1
Max. Impact Energy	: 6.0 J
Impact Rate	: 2,900 bpm
Equivalent to Corded Power	: 950 W
Battery Voltage	: 18 V
Weight with Battery	: 5.9 kg

GBH 18 V-36 C (Bare Unit Only) Cordless Rotary Hammer

HEAVY DUTY

1 year warranty



Capacity

No-load Speed	: 500 min.-1
Max. Impact Energy	: 7 J
Impact Rate	: 2,900 bpm
Equivalent to Corded Power	: 1,000 W
Battery Voltage	: 18 V
Weight with Battery	: 6.1 kg

GBH 18 V-45 C (Bare Unit Only) Cordless Rotary Hammer

HEAVY DUTY

1 year warranty



Capacity

Single Impact Energy	: 12.5 J
Impact Rate Drilling	: 2,720 bpm
Impact Rate Chiselling	: 2,760 bpm
Drilling Diameter	: 12 - 45 mm
Rated Toll Speed	: 0 - 305 rpm
Battery Voltage	: 18 V
Weight with Battery	: 9.3 kg

GKS 18 V-68 GC (Bare Unit Only) Cordless Circular Saw

HEAVY DUTY

1 year warranty



Capacity

Battery	: ProCore 18V 8.0*
SB Diameter /	: 190
Bore Size	: 30**
Cutting Capacity 0°	: 68 (50 / 45)
Bevel Capacity	: 0...50°
Battery Voltage	: 18 V
RPM	: ~2,500...5,000

GTS 18 V-216 (Bare Unit Only) Cordless Table Saw

HEAVY DUTY

1 year warranty



Capacity

No-load Speed	: 4,500 rpm
Saw Blade Diameter	: 216 mm
Bare Hole Diameter	: 30 mm
Cutting Capacity	: 635 mm
Cutting Height	: 70 mm
Battery Voltage	: 18 V
Weight	: 21.6 kg

GCM 18 V-216 (Bare Unit Only) Cordless Mitre Saw

HEAVY DUTY

1 year warranty



Capacity

No-load Speed	: 4,600 rpm
Cutting Dept 0°/45°	: 70 / 45 mm
Cross Cut Capacity 0°/45°	: 270 / 190 mm
Sawblade Diameter	: 216 mm
Battery Voltage	: 18 V
Weight w/o Battery	: 14.7 kg

GCM 18 V-305 GDC (Bare Unit Only) Cordless Mitre Saw

HEAVY DUTY

1 year warranty



Capacity

No-load Speed	: 2,550 - 4,000 rpm
Max. Cutting Dept	: 120 mm
Width	: 400 mm
Equivalent to	: 2,000 W
Disc Diameter	: 305 mm
Battery Voltage	: 18 V
Weight incl. Battery	: 27.8 kg

GWS 18 V-15 SC (Bare Unit Only) Cordless Angle Grinder

HEAVY DUTY

1 year warranty



3.6 V Li-Ion

GSR 3,6 V-Li BitDrive Cordless Screwdriver



Capacity

Max. Screw Dia.	: 5 mm
Max. Torque	: 4.5 Nm
No-load Speed	: 210 rpm
Battery Voltage	: 3.6 V / 1.5 Ah
Charging Time	: 4 hours
Weight	: 0.5 kg

Bosch GO 2 Cordless Screwdriver



Capacity

No-load Speed	: 360 rpm
Torque (Hard / Soft)	: 5 / 2.5 Nm
Max. Screw Diameter	: 5 mm
Electronic Brake	: Yes
Tool Holder	: 1/4" Inter HEX
Smart Stop	: Yes
Charging Port	: Micro USB
Battery Voltage	: 3.6 V / 1.5 Ah
Weight	: 0.31 kg

Bosch GO 2 Kit (included Cable, 33x Bits Cordless Screwdriver)



12 V Li-Ion

GSB 120-LI Cordless Impact Drill Driver



Capacity

Drilling Dia. In Steel	: 6 mm
In Wood	: 19 mm
In Masonry	: 8 mm
Max. Torque (Hard / Soft joint)	: 28 / 11 Nm
Max. Screw Dia.	: 7 mm
No-load Speed	: 0 - 400 / 1,300 rpm
Battery Voltage	: 12 V / 2.0 Ah
Weight	: 1.1 kg

Spare Parts

Switch	2 609 125 169
Chuck	2 609 111 312
Gear Box	1 600 A00 DM7
Motor	2 609 199 258

GSR 120-LI Cordless Drill / Screwdriver



Capacity

Drilling Dia. In Steel	: 10 mm
In Wood	: 20 mm
Max. Torque (Hard / Soft joint)	: 30 / 13 Nm
Max. Screw Dia.	: 7 mm
No-load Speed	: 0 - 380 / 1,300 rpm
Battery Voltage	: 12 V / 2.0 Ah
Weight	: 1.0 kg

Spare Parts

Switch	2 609 125 169
Motor	2 609 199 258
Chuck	2 609 111 312
Gear Box	2 609 199 786

GKS 12 V-LI (Bare Unit Only) Cordless Circular Saw



Capacity

No-load Speed	: 1,400 rpm
Depth of Cut - 90°	: 26.5 mm
Bore Diameter	: 15 mm
Max. Bevel	: 45°
Weight	: 1.4 kg

Spare Parts

Suction Nozzle	1 619 P11 537
Parallel-Guide	1 619 P11 536

GOP 12 V-28 (Bare Unit Only) Cordless Multi-Cutter



Capacity

Oscillation angle on left / right	: 1.4°
No-load Speed	: 5,000 - 20,000 rpm
Battery Voltage	: 12 V
Weight	: 1.0 kg

Spare Parts

Screw	2 609 110 797
Motor	2 609 199 180

GWS 12-76 V-EC (Bare Unit Only) Cordless Angle Grinder



Capacity

No-load Speed	: 19,500 rpm
Battery Voltage	: 12 V
Grinding Spindle Thread	: M5
Bore Size, Diameter	: 10 mm
Weight	: 0.9 kg

GST 12 V-LI (Bare Unit Only) Cordless Jigsaw



Capacity

No-load Stroke Rate	: 1,500 - 2,800 spm
Stroke Length	: 18 mm
Cutting Capacity:	
- in Wood	: 70 mm
- in Aluminium	: 3 mm
- in Non-alloy Steel	: 3 mm
Weight	: 1.5 kg

Spare Parts

Motor	1 619 D10 586
Nozzle	1 619 P10 585

GAS 12 V-LI (Bare Unit Only) Cordless Vacuum Cleaner



Capacity

Filter Surface	: 408 cm²
Max. Airflow	: 12 l/sec
Max. Ventilating Pressure	: 45 mbar
Battery Voltage	: 12 V
Weight	: 0.9 kg

Spare Parts

Filter	1 600 A00 2PS
Nozzle	1 600 A00 2PP

GDR 120-LI Cordless Impact Driver



Capacity

Max. Torque	: 100 Nm
No-load Speed	: 0 - 1,300 / 2,600 rpm
Rated Impact Rate	: 2,800 - 3,300 bpm
Bit Holder	: 1/4" internal hexagon
Battery Voltage	: 12 V / 2.0 Ah
Weight	: 1.05 kg

GDR 12 V-EC Cordless Impact Driver



Capacity

Tool Holder System	: 1/4" Hex (6,35 mm)
No-load Speed	: 0 - 1,200 / 2,600 rpm
Impact Rate	: 0 - 2,700 / 3,100 bpm
Max. Torque	: 110 Nm
Battery Voltage	: 12 V / 2.0 Ah
Weight	: 0.95 kg

Spare Parts

Electronic Module	1 607 233 581
Brushless DC Motor	2 609 199 661

12 V Li-Ion

GSA 12 V-LI (Bare Unit Only) Cordless Sabre Saw

HEAVY DUTY
1 year warranty



Capacity

Stroke Speed	: 0 - 3,000 min
Stroke Length	: 14.5 mm
Pipe Diameter	: 50 mm
Wood	: 65 mm
Weight	: 1.2 kg

Spare Parts

Motor	1 619 P08 652
Electronic Module	1 619 P08 618

GSR 12V-30 Cordless Drill / Driver

HEAVY DUTY
1 year warranty



Capacity

No-load Speed	: 0 - 420 / 1,600 rpm
Torque (Hard / Soft)	: 17 / 30 Nm
Drilling in Wood / Steel	: 20 / 8 mm
Battery Voltage	: 12 V / 2.0 Ah
Weight	: 0.82 kg

GSB 12V-30 Cordless Impact Drill

HEAVY DUTY
1 year warranty



Capacity

No-load Speed	: 0 - 420 / 1,600 rpm
Torque (Hard / Soft)	: 17 / 30 Nm
Drilling in Wood / Steel	: 20 / 8 mm
Battery Voltage	: 12 V / 2.0 Ah
Weight	: 0.82 kg

*GUS 12V-LI (Bare Unit Only) Cordless Universal Shear

HEAVY DUTY
1 year warranty



Capacity

No-load Stroke Rate	: 700 spm
Charging Time	: 45 mins
Weight	: 1.0 kg

Spare Parts

Upper Blade	1 619 PA2 338
DC Motor	1 607 000 751

18 V Li-Ion

GSR 12-15 FC Cordless Drill / Driver

HEAVY DUTY
1 year warranty



Capacity

Drilling Dia.: In Steel	: 10 mm
In Wood	: 19 mm
Max. Torque (hard/soft)	: 30 / 15 Nm
No-load Speed	: 0 - 400 / 1,300 rpm
Battery Voltage	: 12 V / 2.0 Ah
Chuck Capacity	: 10 mm
Weight	: 0.6 kg

GSR 180-LI Cordless Drill / Driver

6 months Warranty



Capacity

Battery Voltage	: 18 V / 2.0 Ah
Chuck Capacity	: 13 mm
No-load Speed (1st gear)	: 0 - 450 rpm
(2nd gear)	: 0 - 1,700 rpm
Torque Settings	: 20+1
Max Screw Dia.	: 10 mm
Max Drilling Wood / Steel	: 35 / 10 mm
Weight	: 1.0 kg

Spare Parts

Carbon Brush	1 607 000 CZ1
Motor	1 607 022 66N

#GDS 18 V-400 (Brushless) Cordless Impact Wrench

HEAVY DUTY
1 year warranty

NEW!



Capacity

Tool Holder	: 1/2" Square
No-load Speed	: 0 - 2,500 rpm
Impact Rate	: 0 - 3,700 bpm
Max. Torque	: 400 Nm
Screw Diameter	: M10 - M20
Battery Voltage	: 18 V / 5.0 Ah
Weight	: 1.25 kg

GDX 180-LI Cordless Impact Wrench/Driver

6 months Warranty



Capacity

Tool Holder	: Hex & Square
No-load Speed	: 0 - 2,800 rpm
Impact Rate	: 0 - 3,600 bpm
Max. Torque	: 180 Nm
Screw Diameter	: M6 - M16
Battery Voltage	: 18 V / 2.0 Ah
Weight	: 1.45 kg

GKS 18 V-LI (Bare Unit Only) Cordless Circular Saw

HEAVY DUTY
1 year warranty



Capacity

Blade Diameter	: 165 mm
Max. Cutting Capacities at 90°	: 51 mm
45°	: 40 mm
Saw Blade Bore Dia.	: 20mm
No-load Speed	: 3,900 rpm
Weight	: 4.1 kg

Spare Parts

Pole Housing	1 615 100 009
Armature	1 619 P01 902
Carbon Brush	2 610 943 623

GOP 18 V-28 (Bare Unit Only) Cordless Multi-Cutter

HEAVY DUTY
1 year warranty



Capacity

Oscillation Angle	
Left / Right	: 1,4°
No-load Speed	: 8,000 - 20,000 rpm
Weight	: 2.0 kg

GSA 18 V-32 (Bare Unit Only) Cordless Sabre Saw

HEAVY DUTY
1 year warranty

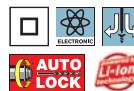


Capacity

Cutting Depth: In Metal	: 175 mm
In Wood	: 230 mm
No-load Stroke Rate	: 0 / 2,500 min ⁻¹
Orbital Action	: 0 - 1 - 2
Stroke length	: 32 mm
Battery Voltage	: 18 V
Weight	: 3.5 kg

GSB 180-LI Cordless Impact Drill

6 months Warranty



Capacity

Max Drilling Masonry	: 10 mm
Max Screw Diameter	: 10 mm
Max Drilling Steel / Wood	: 10 mm / 35 mm
Chuck Capacity	: 13 mm
Torque (Hard / Soft)	: 54 / 21 Nm
No-load Speed (1st gear)	: 0 - 450 rpm
(2nd gear)	: 0 - 1,700 rpm
Battery Voltage	: 18 V / 2.0 Ah
Weight	: 1.6 kg

Spare Parts

Carbon Brush	1 607 000 CZ1
Motor	1 607 022 66N

Note: Items marked '*' are on **Indent Order Basis**. Items marked '#' are also available in **Bare Unit** (without battery and charger)

18 V Li-Ion

GSB 18V-50 (Bare Unit Only) Cordless Impact Drill

HEAVY DUTY
1 year warranty



Capacity

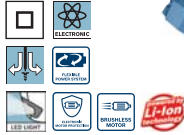
Drilling Dia. In Steel	: 13 mm
In Wood	: 35 mm
In Masonry	: 13 mm
Max. Torque (Hard / Soft joint)	: 50 / 28 Nm
No-load Speed	: 0-460 / 0-1,800 rpm
Max.screw Ø	: 10 mm
Battery Voltage	: 18 V / 5.0 Ah

GST 18 V-50 Set Cordless Impact Drill



GSR 18 V-50 (Bare Unit Only) Cordless Drill / Driver

HEAVY DUTY
1 year warranty



Capacity

Drilling Dia. In Steel	: 13 mm
In Wood	: 35 mm
Max. Torque (Hard / Soft joint)	: 50 / 28 Nm
No-load Speed	: 0 - 460 / 0 - 1,800 rpm
Max.screw Ø	: 10 mm
Battery Voltage	: 18 V / 5.0 Ah

GSR 18 V-50 Set Cordless Drill / Driver



GSS 18 V-LI (Bare Unit Only) Orbital Sander

HEAVY DUTY
1 year warranty



Capacity

Stroke Length	: 28 mm
No-load Orbital Stroke Rate	: 22,000 opm
No-load Speed	: 11,000 rpm
Oscillating circuit Diameter	: 1.6 mm
Weight	: 1.0 kg

Spare Parts

Plate	2 609 101 073
Felt	2 609 170 230
Spring	2 609 111 892

GST 18 V-LI (Bare Unit Only) Cordless Jigsaw

HEAVY DUTY
1 year warranty



Capacity

No-load Stroke Rate	: 2700 spm
Stroke Height	: 23 mm
Cutting Depth In Metal	: 8 mm
In Wood	: 90 mm
Slanted Cuts	: 0 - 45°
Weight Incl. Battery	: 2.4 kg

Spare Parts

Lifting Rod	2 600 780 173
Base Plate	2 601 016 906
Roller Level	2 601 321 077

#GWS 180 LI Cordless Angle Grinder

6 months Warranty

NEW!



Capacity

No-load Speed	: 11,000 rpm
Bore Size, Diameter	: M16
Grinding Spindle Thread	: M10
Grinding / Cutting Disc Dia.	: 100 mm
Battery Voltage	: 18 V / 4.0Ah
Weight excl.. Battery	: 1.4 kg

GWX 180 LI (Bare Unit Only) Cordless Angle Grinder

6 months Warranty

NEW!



Capacity

No-load Speed	: 11,000 rpm
Grinding / Cutting Disc Dia.	: 125 mm
Battery Voltage	: 18 V
Weight excl.. Battery	: 1.6 kg

GWS 18 V-10 (Bare Unit Only) Cordless Angle Grinder

HEAVY DUTY
1 year warranty



Capacity

Max. Output Power: Equivalent to	1000 W
Disc-Ø	: 100 (M10)mm
No-load Speed	: 9,000 rpm
Grip Circumference	: 155 mm
Battery Voltage	: 18 V / 8.0Ah ProCORE
Weight Without Battery	: 2.0 kg

GWS 18 V-10 Set Cordless Angle Grinder



GGG 18 V-LI (Bare Unit Only) Cordless Straight Grinder

HEAVY DUTY
1 year warranty



Capacity

No-load Speed	: 2 - 22,000 rpm
Weight	: 1.8 kg

Spare Parts

Motor	1 617 000 6B0
Electronic Module	1 607 233 340

GAS 18 V-1 (Bare Unit Only) Cordless Vacuum Cleaner

HEAVY DUTY
1 year warranty



Capacity

Container Vol.	: 700 ml
Max. Underpressure	: 6 kPa
Max. Airflow	: 10 l/sec
Speeds	: 1 Speed
Runtime	: 7 min/Ah
Weight (w/o batt, w/o AC)	: 1.3 kg

18 V Li-Ion

GAS 18 V-10 L (Bare Unit Only) Cordless Vacuum Cleaner

HEAVY DUTY
1 year warranty



Capacity

Container (gross / Net)	: 10 / 6 Litre
Max. Underpressure	: 9 kPa
Max. Airflow	: 24 l/sec
Filter Surface Area	: 2.375 cm ²
Runtime	: 4 min/Ah
Weight (w/o batt, w/o AC)	: 4.7 kg
Wet / Dry Usage	

GBL 18 V-120 (Bare Unit Only) Blower

HEAVY DUTY
1 year warranty



Capacity

No-load Speed	: 17,000 rpm
Air Speed, Max	: 75 m/s
Air Volume	: 2.0 m ³ /min
Runtime	: Speed I : 9 min / Ah
	: Speed II: 5 min / Ah
Weight without Cable	: 1.1 kg

Spare Parts

Nozzle	1 619 PA9 087
--------	---------------

GCB 18 V-63 (Bare Unit Only) Cordless Band Saw

HEAVY DUTY
1 year warranty

NEW!



Capacity

No-load Speed	: 162 m/min
Saw Blade Diameter	: 733 x 12,7 x 0.4 mm
Max. Cutting Depth	: 63,5 mm
Weight	: 3.3 kg

GBH 18 V-EC Cordless Rotary Hammer

HEAVY DUTY
1 year warranty



Capacity

In Concrete	: 4 - 18 mm
In Steel / Wood	: 13 / 20 mm
Rated Speed	: 0 - 1,400 rpm
Impact Rate	: 0 - 4,550 bpm
Battery Voltage	: 18 V / 3.0 Ah
Weight	: 2.6 kg

Spare Parts

Protection Sleeve	1 617 000 6D3
Electronics Module	1 607 233 376
Hammer Piston	1 618 700 083
O-ring	1 610 210 244

GBH 18 V-26 (Bare Unit Only) Cordless Rotary Hammer

HEAVY DUTY
1 year warranty



Capacity

In Concrete	: 4 - 26 mm
In Steel / Wood	: 13 mm / 30 mm
Rated Speed	: 0 - 890 rpm
Impact Rate	: 0 - 4,350 bpm
Impact Energy	: 2,6 J
Max. Drilling Ø Concrete	: 26 mm
Weight	: 3.6 kg**

GBH 18 V-26 + GDE 18 V-16 Cordless Rotary Hammer + Dust Extractor

HEAVY DUTY
1 year warranty



Capacity

In Concrete	: 4 - 26 mm
In Steel / Wood	: 13 mm / 30 mm
Rated Speed	: 0 - 890 rpm
Impact Rate	: 0 - 4,350 bpm
Impact Energy	: 2,6 J
Max. Drilling Ø Concrete	: 26 mm
Battery Voltage	: 18 V / 6.0 Ah
Weight	: 3.6 kg**

GBH 180-LI (Brushless) Dust Cap Execution Cordless Rotary Hammer

6 months Warranty



Capacity

Drilling Capacity (on concrete)	: 20 mm
No-load Speed	: 0 - 1,800 rpm
Impact Rate	: 0 - 5,100 bpm
Impact Energy	: 2.0 J
Mode	: 3
Battery Voltage	: 18 V / 4.0 Ah
Weight (bare tool)	: 2.3 kg

36 V Li-Ion

*GSR 36 VE-2-LI Cordless Drill Driver

HEAVY DUTY
1 year warranty



Capacity

Max. Drilling Dia. In Wood	: 102 mm
In Steel	: 16 mm
Torque, Max (Hard/Soft)	: 100 Nm
No-load Speed	: 0 - 420 / 1,800 rpm
Max. Screw Diameter	: 12 mm
Battery Voltage	: 36 V / 4.0 Ah
Weight	: 3.3 kg

Spare Parts

Motor	1 607 022 647
Electronics Module	1 607 233 511
Chuck	2 609 111 104

*GSA 36 V-LI Cordless Sabre Saw

HEAVY DUTY
1 year warranty



Capacity

Stroke Length	: 28 mm
No-load Stroke Rate	: 2,400 / 3,000 spm
Battery Voltage	: 36 V / 2.6 Ah
Weight	: 4.2 kg

Spare Parts

Tool Holder	2 610 920 684
Supporting Foot	2 610 935 005

GBH 36 V-LI Plus Cordless Rotary Hammer

HEAVY DUTY
1 year warranty



Capacity

In Concrete	: 4 - 28 mm
In Steel / Wood	: 13 / 30 mm
No-load Speed	: 0 - 940 rpm
Impact Rate	: 0 - 4,200 bpm
Battery Voltage	: 36 V / 4.0 Ah
Weight	: 4.5 kg

Spare Parts

Motor	1 607 022 662
Electronics Module	1 600 A01 1GZ
Tool Holder Fixture	1 617 000 6CB

GBH 36 V-EC Compact Cordless Rotary Hammer

HEAVY DUTY
1 year warranty



Capacity

In Concrete	: 4 - 18 mm
In Steel	: 13 mm
In Wood	: 30 mm
Rated Speed	: 0 - 1,500 rpm
Impact Rate	: 0 - 4,850 bpm
Battery Voltage	: 36 V / 2.0 Ah
Weight	: 2.9 kg

Spare Parts

Protection Sleeve	1 617 000 6D3
Electronics Module	1 607 233 316
Hammer Piston	1 618 700 083
O-ring	1 610 210 244
Jack Shaft	1 617 000 668

12 V Battery Pack



12 V, 2.0 Ah



12 V, 2.5 Ah

18 V Battery Pack



2.0 Ah



4.0 Ah



6.0 Ah

ProCore 18 V



4.0 Ah



8.0 Ah



12.0 Ah

36 V Battery Pack



2.0 Ah



6.0 Ah

Charger



GAL 1240 CV
(For 10.8 V & 12 V)



GAL 1830 W
+ Frame (UK)



GAL 18 V-40
(For 10.8 V to 18 V)



GAL 3680 CV
(For 14.4 V to 36 V)

L-BOXX



L-BOXX 102



L-BOXX 136



L-BOXX 238



L-BOXX 374

12 V / 18 V Starter Kit



12 V 2.0 Ah (2 Batteries)
+ GAL 12 V-40 (1 Charger)



18 V 2.0 Ah (2 Batteries)
+ GAL 18 V-40 (1 Charger)



18 V 4.0 Ah (2 Batteries)
+ GAL 18 V-40 (1 Charger)



18 V 6.0 Ah (2 Batteries)
+ GAL 1880 (1 Charger)



Charger (AL 1860 CV) +
2 Battery Packs (18 V, 4.0 Ah)



GBA 18 V 1 X 4.0 Ah MW



2.0 Ah 18 V
(1 Charger + 1 Battery)

Drill

GBM 10 RE

HEAVY DUTY
1 year warranty



Capacity

Power Input	: 450 W
In Steel	: 10 mm
In Aluminium	: 10 mm
In Wood	: 25 mm
No-load Speed	: 0 - 2,600 rpm
Weight	: 1.3 kg

Spare Parts

Carbon Brush	2 610 391 290
Switch	2 607 200 623
Chuck	2 608 571 078

GBM 13 RE

HEAVY DUTY
1 year warranty



Capacity

Power Input	: 600 W
In Steel	: 13 mm
In Aluminium	: 13 mm
In Wood	: 30 mm
No-load Speed	: 0 - 2,600 rpm
Weight	: 1.65 kg

Spare Parts

Carbon Brush	2 610 391 290
Switch	2 607 200 623
Chuck	2 608 572 253

GBM 13 HRE "High Torque"

HEAVY DUTY
1 year warranty



Capacity

Power Input	: 550 W
In Steel	: 13 mm
In Aluminium	: 20 mm
In Wood	: 40 mm
No-load Speed	: 0 - 550 rpm
Torque	: 40 Nm
Weight	: 2.1 kg

Spare Parts

Carbon Brush	1 607 031 222
Switch	2 607 200 920
Chuck	2 608 572 253

*GBM 16-2 RE

HEAVY DUTY
1 year warranty



Capacity

Power Input	: 1,050 W
In Steel	: 16 / 8 mm
In Wood	: 20 / 13 mm
No-load Speed Hi	: 0 - 1,200 rpm
Lo	: 0 - 520 rpm
Weight	: 3.7 kg

Spare Parts

Carbon Brush	3 607 014 012
Switch	1 607 200 075

*GBM 23-2 E

HEAVY DUTY
1 year warranty



Capacity

Power Input	: 1,150 W
In Steel	: 23 / 13 mm
In Wood	: 50 / 35 mm
No-load Speed Hi	: 0 - 640 rpm
Lo	: 0 - 280 rpm
Weight	: 4.6 kg

Spare Parts

Carbon Brush	3 607 014 012
Switch	1 607 200 075

Drill

GBM 50-2

HEAVY DUTY
1 year warranty



Capacity

Power Input	: 1,200 W
No-load Speed	: 50 - 255 / 100 - 510 rpm
Annular Cutter	: Ø50 mm
Max. Twist Drill	: Ø23
Max. Thread	: M16
Weight	: 14.7 kg

GBM 350

6 months Warranty



Capacity

Power Input	: 350 W
In Steel	: 10 mm
In Aluminium	: 13 mm
In Wood	: 20 mm
No-load Speed	: 0 - 2,800 rpm
Weight	: 1.2 kg

Spare Parts

Carbon Brush	1 619 P20 086
Switch	2 607 200 623
Chuck	2 608 571 078

Impact Drill

GSB 10 RE (Also Available in 110V)

6 months Warranty



Capacity

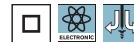
Power Input	: 500 W
In Masonry	: 10 mm
In Steel	: 8 mm
In Wood	: 20 mm
No-load Speed	: 0 - 2,600 rpm
Weight	: 1.5 kg

Spare Parts

Carbon Brush	2 610 391 290
Switch	2 607 200 623
Armature	2 609 120 232
Coil	2 604 220 718
Chuck	2 608 571 078

GSB 13 RE

HEAVY DUTY
1 year warranty



Capacity

Power Input	: 650 W
In Concrete	: 13 mm
In Steel	: 10 mm
In Wood (hard)	: 20 mm
No-load Speed	: 0 - 3,150 rpm
Impact Rate	: 0 - 47,000 bpm
Weight	: 1.6 kg

Spare Parts

Carbon Brush	2 610 391 290
Switch	2 607 200 623
Chuck	2 608 572 253

GSB 16 RE (Also Available in 110V)

HEAVY DUTY
1 year warranty



Capacity

Power Input	: 750 W
In Concrete	: 16 mm
In Steel	: 12 mm
In Wood (hard)	: 25 mm
No-load Speed	: 0 - 3,250 rpm
Impact Rate	: 0 - 48,500 bpm
Weight	: 1.8 kg

Spare Parts

Carbon Brush	2 610 391 290
Switch	1 607 200 270
Chuck	2 608 572 253

GSB 20-2 RE

HEAVY DUTY
1 year warranty



Capacity

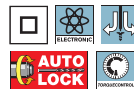
Power Input	: 800W
In Concrete	: 20 mm
In Steel	: 13 mm
In Wood (hard)	: 40 mm
No-load Speed	: 0 - 1,000 / 3,000 rpm
Impact Rate	: 0 - 16,000 / 48,000 bpm
Weight	: 2.6 kg

Spare Parts

Carbon Brush	1 617 000 525
Switch	1 607 200 270
Chuck	2 608 572 253

*GSB 21-2 RCT

HEAVY DUTY
1 year warranty



Capacity

Power Input	: 1,300 W
In Concrete	: 22 / 13 mm
In Steel	: 16 / 10 mm
In Wood (hard)	: 40 / 25 mm
No-load Speed	: 0 - 900 / 3,000 rpm
Max. Torque	: 43 - 20.5 Nm
Weight	: 2.8 kg

Spare Parts

Carbon Brush	1 617 000 525
Switch	2 607 200 679

Multi-Cutter

GOP 30-28

HEAVY DUTY
1 year warranty



Capacity

Power Input	: 300W
Oscillating amplitude	: 2.8° (2 x 1.4°)
No-load Speed	: 8,000 - 20,000 opm
Voltage	: 230 / 240 V
Frequency	: 50 / 60 Hz
Weight	: 1.5 kg

Rotary Hammer

GBH 2-20 RE

6 months Warranty



Capacity

Power Input	: 600W
In Concrete	: 20 mm
In Steel	: 13 mm
In Wood	: 30 mm
No-load Speed	: 0-1,000 rpm
Impact Rate	: 0-4,400 bpm
Weight	: 2.3 kg

Spare Parts

Carbon Brush	1 607 031 222
Switch	1 617 200 542
Armature	1 619 P09 818
Coil	1 619 P08 313

GBH 2-23 RE (Only available in 110V)

6 months Warranty



Capacity

Power Input	: 650 W
In Concrete	: 23 mm
In Steel	: 13 mm
In Wood	: 30 mm
No-load Speed	: 0 - 1,000 rpm
Impact Rate	: 0 - 4,400 bpm
Weight	: 2.3 kg

Spare Parts

Carbon Brush	1 617 000 525
Switch	1 617 200 532
Armature	1 617 000 561
Coil	2 604 220 693

GBH 220

6 months Warranty

NEW!

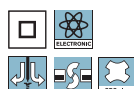


Capacity

Power Input	: 720 W
In Concrete	: 22 mm
In Metal	: 13 mm
In Wood	: 30 mm
Impact Energy	: 2 J
Impact Rate	: 0 - 4,800 bpm
Weight	: 2.3 kg

GBH 2-24 RE / DRE

HEAVY DUTY
1 year warranty



Capacity

Power Input	: 790 W
In Steel	: 13 mm
In Wood	: 30 mm
Impact Energy	: 2.7 J
No-load Speed	: 0 - 1,300 rpm
Impact Rate	: 0 - 4,200 bpm
Weight	: 2.8 kg

Spare Parts

Carbon Brush	1 617 000 525
Switch	1 607 200 32D
Armature	1 619 P13 626

Rotary Hammer

GBH 2-26 RE (Also Available in 110V)



HEAVY DUTY 1 year warranty

Capacity

Power Input	: 800 W
In Concrete	: 4 - 26 mm
In Steel	: Up to 13 mm
In Wood	: Up to 30 mm
No-load Speed	: 0 - 900 rpm
Impact Rate	: 0 - 4,000 bpm
Weight	: 2.7 kg

Spare Parts

Carbon Brush	1 617 000 515
Switch	1 617 200 532
Armature	1 619 P10 005
Coil	1 614 220 127

GBH 2-26 DRE



HEAVY DUTY 1 year warranty

Capacity

Power Input	: 800 W
In Concrete	: 4 - 26 mm
In Steel	: Up to 13 mm
In Wood	: Up to 30 mm
No-load Speed	: 0 - 900 rpm
Impact Rate	: 0 - 4,000 bpm
Weight	: 2.7 kg

Spare Parts

Carbon Brush	1 617 000 525
Switch	1 617 200 532

GBH 2-26 DFR



HEAVY DUTY 1 year warranty

Capacity

Power Input	: 800 W
In Concrete	: 4 - 26 mm
In Steel	: Up to 13 mm
In Wood	: Up to 30 mm
No-load Speed	: 0 - 900 rpm
Impact Rate	: 0 - 4,000 bpm
Weight	: 2.9 kg

Spare Parts

Carbon Brush	1 617 000 525
Switch	1 617 200 532
Tool Holder	1 617 000 895

GBH 2-28 DFV



HEAVY DUTY 1 year warranty

Capacity

Power Input	: 820 W
Impact Energy	: 0 - 3.2 J
In Concrete	: 4-28 mm
In Steel	: 13 mm
In Masonry	: 68 mm
No-load Speed	: 0 - 1,300 rpm
Impact Rate	: 0 - 5,100 bpm
Weight	: 2.9 kg

Spare Parts

Carbon Brush	1 617 000 525
Switch	1 617 200 532
Tool Holder	1 617 000 895

GBH 3-28 DFR



HEAVY DUTY 1 year warranty

Capacity

Power Input	: 800 W
In Concrete	: 28 mm
In Steel	: Up to 13 mm
In Wood	: Up to 30 mm
No-load Speed	: 0 - 900 rpm
Impact Rate	: 0 - 4,000 bpm
Weight	: 3.6 kg

Spare Parts

Carbon Brush	1 617 000 525
Switch	1 617 200 127
Tool Holder	1 617 000 895

GBH 4-32 DFR



HEAVY DUTY 1 year warranty

Capacity

Power Input	: 900 W
In Concrete	: 32 mm
In Steel	: Up to 13 mm
In Wood	: Up to 32 mm
No-load Speed	: 0 - 760 rpm
Impact Rate	: 0 - 3,600 bpm
Weight	: 4.7 kg

Spare Parts

Carbon Brush	1 614 321 079
Switch	1 617 200 127
Tool Holder	1 617 000 895

Rotary Hammer with SDS-Max

GBH 5-40 D (Also Available in 110V)



HEAVY DUTY 1 year warranty

Capacity

Power Input	: 1,100 W
Rate Speed	: 170 - 340 rpm
Impact Energy	: 8.5 J
Chisel Positions	: 12
Impact Rate	: 1,500 - 2,900 bpm
Weight	: 6.8 kg

Spare Parts

Carbon Brush	1 617 014 138
Hammer Piston	1 619 P10 765
Armature	1 619 P10 769
Coil	1 619 P08 323

GBH 8-45 D (Also Available in 110V)



HEAVY DUTY 1 year warranty

Capacity

Power Input	: 1,500 W
Impact Energy	: 12.5 J
No-load Speed	: 0 - 305 rpm
Impact Rate	: 1,380 - 2,720 bpm
Weight	: 8.2 kg

Spare Parts

Carbon Brush	1 617 000 A50
Armature	1 614 010 267
Coil	1 614 220 124

Magnetic Drill Stand

*GMB 32



Capacity

Power Input	: 95 W
Clamping Flange Diameter	: 65 mm
Magnet Retention Force	: 25 kN
Working Length, Z-axis	: 223 mm
Twist Drill Bit Diameter	: 32 mm
Core Cutter Dia.	: 12 - 60 mm
Weight	: 26 kg

Spare Parts

Switch	3 609 201 527
--------	---------------

Dust Extractor

*GDE 68



Capacity

Drilling Diameter	: max. 68 mm
Weight	: 0.325 kg

Suitable for all drilling tools, e.g.
GBH 4-32 DFR, GBH 5-40 DCE,
GBH 8-45 DV

Spare Parts

Sealing Profile	1 600 A00 1MJ
Brush Bar	1 600 A00 1MK

*GDE 162



Capacity

Drilling Diameter	: max. 162 mm
Weight	: 0.5 kg

Suitable for all drilling tools, e.g.
GBH 4-32 DFR, GBH 5-40 DCE,
GBH 8-45 DV

Spare Parts

Sealing Profile	1 600 A00 1MJ
Brush Bar	1 600 A00 1NT

*GDE 16



Capacity

Drilling Diameter	: max. 16 mm
Maximum drilling depth	: 120 mm
Weight	: 0.520 kg

Suitable for GBH 2-20 D, GBH 2-24 D / DF,
GBH 2400, GBH 2600, GBH 2-26 RE / DRE
/ DFR, GBH 2-28 DV / DFV, GBH 3-28 DRE
/ DFR, GBH 18 V-EC, GBH 36 V-LI / VF-LI

Spare Parts

Socket Pipe	1 600 A00 1PZ
Elbow	1 600 A00 1JN

Dust Extractor

*GDE Max



Capacity

Weight	: 0.750 kg
Suitable for GSH 5 CE, GSH 7 VC, GSH 11 VC, GBH 5-40 DCE, GBH 7-46 DE, GBH 8-45 DV, GBH 11 DE	

Spare Parts

V-Block	1 600 A00 1W1
Index Turning Toolholder	1 600 A00 1R9
Brush Bar	1 600 A00 1LX

Demolition Hammer

GSH 5 (SDS MAX)

HEAVY DUTY
1 year warranty



Capacity

Power Input	: 1,100 W
Impact rate	: 2,850 bpm
Impact Energy	: 7.5 J
No-load Speed	: 27,000 rpm
Weight	: 5.6 kg

Spare Parts

Carbon Brush	1 617 014 138
Hammer Piston	1 619 P07 775
Armature	1 619 P10 090
Coil	1 619 P05 386

GSH 5X Plus
(Also Available in 110V)

6 months Warranty



Capacity

Power Input	: 1,025 W
Impact rate	: 2,750 bpm
Impact Energy	: 6.8 J
Tool holder	: Hex (17 mm)
Voltage	: 240 V
Frequency	: 50 / 60 Hz
Weight	: 5.5 kg

Spare Parts

Carbon Brush	1 617 014 138
Hammer Piston	1 619 P09 703
Switch	1 619 P09 019
Armature	1 619 P09 697
Coil	1 619 P08 302

GSH 5 CE
(*Also Available in 110V)

HEAVY DUTY
1 year warranty



Capacity

Power Input	: 1,150 W
Impact rate	: 1,300 - 2,900 bpm
Impact Force	: 2 - 13 J
Weight	: 6.2 kg

Spare Parts

Carbon Brush	1 617 014 138
Armature	1 614 011 098
Stopping Device	1 612 300 036
Indexing Disk	1 610 290 076
Hammer Piston	1 617 000 A00

GSH 500 Gen 2

6 months Warranty

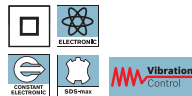


Capacity

Power Input	: 1,100 W
Impact rate	: 2,900 bpm
Impact Energy	: 7.8 J
Tool holder	: Hex (17 mm)
No-load Speed	: 2,900 rpm
Weight	: 5.6 kg

GSH 9 VC (Also Available in 110V)

HEAVY DUTY
1 year warranty



Capacity

Power Input	: 1,500 W
Impact Force	: 13 J
Vibration Value	: 9.5 m/s ²
Weight	: 8.5 kg

Spare Parts

Carbon Brush	1 617 000 A50
Armature	1 614 010 267
Coil	1 614 220 124

GSH 11 E (Also Available in 110V)

HEAVY DUTY
1 year warranty



Capacity

Power Input	: 1,500 W
Impact rate	: 900 - 1,890 bpm
Impact Force	: 6 - 25 J
Weight	: 10.1 kg

Spare Parts

Carbon Brush	1 617 014 126
Switch	1 617 200 048
Coil	1 607 000 C3V

GSH 11 VC (Also Available in 110V)

HEAVY DUTY
1 year warranty



Capacity

Power Input	: 1,700 W
Impact Rate	: 900-1,700 bpm
Impact Force	: 23 J
Vibration Values Chiselling	: 8 m/s ²
Voltage	: 230 / 240 V
Frequency	: 50 / 60 Hz
Weight	: 11.4 kg

Spare Parts

Carbon Brush	1 617 000 A50
Armature	1 614 011 120
Coil	1 604 220 52F

GSH 16-30

HEAVY DUTY
1 year warranty



Capacity

Power Input	: 1,750 W
Impact rate	: 1,300 bpm
Impact Force	: 45 J
Weight	: 16.5 kg

Spare Parts

Carbon Brush	1 617 014 126
Hammer Piston	1 607 000 C3M
Armature	1 614 011 117
Switch	1 607 200 244
Coil	1 604 220 52M

*GSH 27 VC

HEAVY DUTY
1 year warranty



Capacity

Power Input	: 2,000 W
Impact rate	: 1,000 bpm
Impact Force	: 69 J
Weight	: 29.5 kg

Spare Parts

Carbon Brush	1 617 000 425
Armature	1 614 011 139

Straight Grinder

GGG 3000 L

6 months Warranty



Capacity

Power Input	: 300 W
Collet	: 6 mm
Diameter (L x H x W)	: 360 x 80 x 80 mm
No-load Speed	: 28,000 rpm
Voltage	: 240 V
Frequency	: 50 / 60 Hz
Weight	: 1.8 kg

Spare Parts

Carbon Brush	1 607 031 223
Armature	1 619 P08 203
Switch	1 607 200 146
Coil	1 619 P09 835

GGG 5000 L

6 months Warranty



Capacity

Power Input	: 500 W
No-load Speed	: 33,000 rpm
Max. Collect Capacity	: 8 mm
Diameter (L x H x W)	: 360 x 80 x 80 mm
Voltage	: 240 V
Frequency	: 50 / 60 Hz
Weight	: 1.4 kg

Spare Parts

Carbon Brush	1 607 031 223
Armature	1 619 P08 212
Switch	1 607 014 146
Coil	1 619 P09 888

Note: Items marked '*' are on Indent Order Basis.

Straight Grinder

GGG 28 C

HEAVY DUTY
1 year warranty



Capacity

Power Input	: 650 W
Max.Collet Diameter	: 8 mm
No-load Speed	: 28,000 rpm
Voltage	: 230 / 240 V
Frequency	: 50 / 60 Hz
Weight	: 1.4 kg

Spare Parts

Carbon Brush	1 607 014 176
Armature	3 607 030 476
Switch	1 607 200 199
Coil	3 607 030 475

*GGG 28 LC (Also Available in 110V)

HEAVY DUTY
1 year warranty



Capacity

Power Input	: 650 W
Max.Collet Diameter	: 8 mm
No-load Speed	: 28,000 rpm
Voltage	: 230 / 240 V
Frequency	: 50 / 60 Hz
Weight	: 1.6 kg

Spare Parts

Carbon Brush	1 607 014 176
Armature	3 607 030 476
Switch	1 607 200 199
Coil	3 607 030 475

*GGG 6 S

HEAVY DUTY
1 year warranty



Capacity

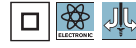
Power Input	: 1,200 W
Grinding Points (Diameter)	: Max. 125 mm
No-load Speed	: 6,800 rpm
Weight	: 3.9 kg

Spare Parts

Carbon Brush	3 607 014 012
Armature	1 604 010 474
Switch	1 607 200 064

Angle Grinder

GWS 060



Capacity

Power Input	: 670 W
No-load Speed	: 12,000 rpm
Spindle	: M10
Disc Dia.	: 100 mm
Weight	: 1.6 kg

Spare Parts

Carbon Brush	1 607 031 223
Armature	1 619 P01 844
Switch	1 607 200 179
Coil	1 619 P12 316

GWS 6-100 (Only available in 110V)



Capacity

Power Input	: 670 W
Grinding / Cutting	
Disc Diameter	: 100 mm
Wire Cup Brush Diameter	: 70 mm
No-load Speed	: 11,000 rpm
Weight	: 1.8 kg

Spare Parts

Carbon Brush	1 607 031 223
Armature	1 604 010 626
Switch	1 607 200 179
Coil	1 604 220 328

GWS 750-100

HEAVY DUTY
1 year warranty



Capacity

Power Input	: 750 W
No-load Speed	: 11,000 rpm
Disc Diameter	: 100 mm
Grip Size	: 59 / 54.5 mm
Perimeter	: 187 mm
Weight	: 1.8 kg

Spare Parts

Carbon Brush	1 607 031 223
Armature	1 619 P08 234
Coil	1 619 P08 334

GWS 9-100 P (Also Available in 110V)

HEAVY DUTY
1 year warranty



Capacity

Power Input	: 900 W
Grinding / Cutting	
Disc Diameter	: 100 mm
Wire Cup Brush Dia.	: 70 mm
No-load Speed	: 11,000 rpm
Weight	: 1.9 kg

GWS 900-100

HEAVY DUTY
1 year warranty



Capacity

Power Input	: 900 W
Grinding / Cutting	
Disc Diameter	: 100 mm
No-load Speed	: 11,000 rpm
Grinding Spindle Thread	: M 10
Weight	: 1.8 kg

Spare Parts

Carbon Brush	1 607 031 223
--------------	---------------

GWS 900-100 S

HEAVY DUTY
1 year warranty



Capacity

Power Input	: 900 W
Grinding / Cutting	
Disc Diameter	: 100 mm
Grinding Spindle Thread	: M10
No-load Speed	: 2,800 - 11,000 rpm
Weight	: 1.9 kg

GWS 11-125 P (Only available in 110V)

HEAVY DUTY
1 year warranty



Capacity

Power Input	: 1,100 W
No-load Speed	: 11,500 rpm
Grinding Spindle Thread	: M14
Disc Diameter	: 125 mm
Wire Cup Brush Diameter	: 75 mm
Weight	: 2.2kg

GWS 13-125 CI

HEAVY DUTY
1 year warranty



Capacity

Power Input	: 1,300 W
No-load Speed	: 11,500 rpm
Grinding Spindle Thread	: M14
Disc Diameter	: 125 mm
Wire Cup Brush Diameter	: 75 mm
Weight	: 2.3 kg

Spare Parts

Carbon Brush	1 607 000 V37
Bearing Flange	1 607 000 448
Gear Sets	1 607 000 V44

GWS 17-125 CI

HEAVY DUTY
1 year warranty



Capacity

Power Input	: 1,700 W
No-load Speed	: 11,500 rpm
Grinding Spindle Thread	: M14
Disc Diameter	: 125 mm
Wire Cup Brush Diameter	: 75 mm
Weight	: 2.4 kg

Spare Parts

Carbon Brush	1 607 000 V37
Bearing Flange	1 607 000 448
Gear Sets	1 600 A00 22W

Angle Grinder

GWS 17-150 CI

HEAVY DUTY
1 year warranty



Capacity

Power Input	: 1,700 W
No-load Speed	: 9,300 rpm
Grinding Spindle Thread	: M14
Disc Diameter	: 150 mm
Wire Cup Brush Diameter	: 75 mm
Weight	: 2.4 kg

Spare Parts

Carbon Brush	1 607 000 V37
Bearing Flange	1 607 000 449
Gear Sets	1 607 000 A4P

GWS 18-125 L

HEAVY DUTY
1 year warranty



Capacity

Power Input	: 1,800 W
No-load Speed	: 12,000 rpm
Grinding Spindle Thread	: M14
Disc Diameter	: 125 mm
Wire Cup Brush Diameter	: 75 mm
Weight	: 2.5 kg

GWS 18-150 L

HEAVY DUTY
1 year warranty



Capacity

Power Input	: 1,800 W
No-load Speed	: 10,000 rpm
Grinding Spindle Thread	: M14
Disc Diameter	: 150 mm
Wire Cup Brush Diameter	: 75 mm
Weight	: 2.6 kg

*GWS 20-180 (Only Available in 110V)

HEAVY DUTY
1 year warranty



Capacity

Power Input	: 2,000 W
Grinding / Cutting	
Disc Diameter	: 180 mm
Wire Cup Brush Diameter	: 100 mm
No-load Speed	: 8,500 rpm
Weight	: 4.2 kg

Spare Parts

Carbon Brush	1 607 014 171
Armature	1 604 011 252
Coil	1 604 220 380
Switch	1 607 000 967

GWS 2200-180



NEW!



Capacity

Power Input	: 2,200 W
Grinding / Cutting	
Disc Diameter	: 180 mm
Grinding Spindle Thread	: M14
No-load Speed	: 8,500 rpm
Weight	: 5 kg

GWS 2200-230



NEW!



Capacity

Power Input	: 2,200 W
No-load Speed	: 6,500 rpm
Disc Diameter	: 230 mm
Grinding Spindle Thread	: M14
Weight	: 5 kg

GWS 24-180 JZ

HEAVY DUTY
1 year warranty

NEW!



Capacity

Power Input	: 2,400 W
No-load Speed	: 8,500 rpm
Disc Diameter	: 180 mm
Grinding Spindle Thread	: M14
Weight	: 5.3 kg

GWS 24-230 JZ

HEAVY DUTY
1 year warranty

NEW!



Capacity

Power Input	: 2,400 W
No-load Speed	: 6,500 rpm
Disc Diameter	: 230 mm
Grinding Spindle Thread	: M14
Weight	: 5.5 kg

Impact Wrench

GWX 9-125 S

HEAVY DUTY
1 year warranty



Capacity

Power Input	: 900 W
No-load Speed	: 2,800 - 11,000 rpm
Switch	: 2-way
Disc Diameter	: 125 mm
Wire Cup Brush	
Diameter	: 75 mm
Weight	: 2.1 kg

GWX 14-125

HEAVY DUTY
1 year warranty



Capacity

Power Input	: 1,400 W
No-load Speed	: 11,000 rpm
Grinding Spindle Thread	: M14
Disc Diameter	: 125 mm
Wire Cup Brush Diameter	: 75 mm
Weight	: 2.3 kg

Impact Wrench

*GDS 18 E (Also Available in 110V)

HEAVY DUTY
1 year warranty



Capacity

Power Input	: 500 W
Bolts kW	: M6 - M18
Torque	: 70 - 250 Nm
No-load Speed	: 500 - 1,300 rpm
Weight	: 3.3 kg

Spare Parts

Carbon Brush	1 619 PA2 438
Tool Holding Fixture	1 619 PA2 453
Armature	1 619 PA2 436
Coil	1 619 PA2 435

*GDS 30

HEAVY DUTY
1 year warranty



Capacity

Power Input	: 920 W
Torque	: 500 - 1,000 Nm
Toolholder	: 1" External square
No-load Speed	: 860 rpm
Weight	: 7.3 kg

Spare Parts

Carbon Brush	3 607 014 012
--------------	---------------

Stirrer / Mixer Drill

GRW 12 E

HEAVY DUTY
1 year warranty



Capacity

Power Input	: 1,200 W
Rated Torque	: 12,0 Nm
Connector Type	: M14 Inside Thread
Max. Paddle Ø	: 140 mm
Incl. Paddle Ø	: 140 mm
No-load Speed	: 0 - 1,000 rpm
Weight	: 5.3 kg

Spare Parts

Carbon Brush	1 607 014 17A
Armature	1 604 010 B1U
Mixer Attachment	3 609 201 036
Coil	1 604 220 235

Shear

*GSC 2.8

HEAVY DUTY
1 year warranty



Capacity

Power Input	: 500 W
In Steel	: 2.8 mm
In Aluminium	: 3.5 mm
No-load Stroke Rate	: 2,400 rpm
Weight	: 2.7 kg

Spare Parts

Upper Blade	2 608 635 065
Lower Blade	2 608 635 042

Bench Grinder

GBG 35-15

HEAVY DUTY
1 year warranty



Capacity

Power Input	: 350 W
No-load Speed	: 3,000 rpm
Disc Diameter	: 150 mm
Weight	: 10 kg

GBG 60-20

HEAVY DUTY
1 year warranty



Capacity

Power Input	: 600 W
No-load Speed	: 3,600 rpm
Disc Diameter	: 200 mm
Weight	: 17 kg

Marble Cutter

GDC 140



Capacity

Power Input	: 1,400 W
Cutting Depth	: 35 mm
Cutting Diameter	: 115 mm
No-load Speed	: 13,200 rpm
Weight	: 2.9 kg

Nibbler

*GNA 2.0

HEAVY DUTY
1 year warranty



Capacity

Power Input	: 500 W
Mild Steel	: 2.0 mm
Stainless Steel	: 1.0 mm
No-load Speed	: 2,400 Stroke/min
Weight	: 2.0 kg

Spare Parts

Carbon Brush	1 607 031 228
Die Holder	2 608 639 900
Straight & Curve Cutting Punch	2 608 639 013

Circular Saw

GKS 140



Capacity

Power Input	: 1,400 W
Cutting depth: In Wood	: 184 mm
Saw Blade Bore Diameter	: 20 mm
No-load Speed	: 6,200 rpm
Base Plate	: 290 x 150 mm
Cutting depth (90°/45°)	: 64 / 45 mm
Weight	: 3.7 kg

GKS 600



Capacity

Power Input	: 1,200 W
No-load Speed	: 5,000 rpm
Disc Diameter	: 165 mm
Cutting depth (90°/45°)	: 55 / 37 mm
Weight	: 3.6 kg

Drywall Screwdriver

GTB 650



NEW!



Capacity

Power Input	: 650 W
No-load Speed	: 0 - 5,000 rpm
Rated Speed	: 0 - 5,200 rpm
Torque, max.	: 12 Nm
Bit Holder	: 1/4" internal hexagon
Weight	: 1.4 kg

Sabre Saw

GSA 1100 E
(Only Available in 110V)

HEAVY DUTY
1 year warranty



Capacity

Power Input	: 1,100 W
Cutting depth: In Wood	: 230 mm
In Metal	: 20 mm
No-load Stroke Rate	: 0 - 2,700 spm
Weight	: 3.6 kg

Spare Parts

Carbon Brush	2 610 956 917
Screw	1 619 P05 408
Blade Holder	1 619 PA4 168
Supporting Foot	2 610 956 898

Reciprocating Saw

GSA 120



Capacity

Power Input	: 1,200 W
Stroke Rate	: 0 - 3,000/min.
Stroke Length	: 29 mm
Blade Change	: SDS
Cutting Depth in Wood	: 220 mm
in Metal	: 20 mm
Weight	: 3.7 kg

Diamond Wheel Cutter

GDM 13-34
(Only Available in 110V)

HEAVY DUTY
1 year warranty



Capacity

Power Input	: 1,300 W
Blade Diameter	: 110 mm
Max. Cutting Depth	: 34 mm
Base Plate	: 100 X 190 mm
No-load Speed	: 12,000 rpm
Weight	: 2.8 kg

Spare Parts

Carbon Brush	1 619 P06 304
Armature	1 619 P06 303
Screw	1 619 P00 278
Inner Flange	1 619 P07 057
Outer Flange	1 619 P06 295

Dry Cutter

GCD 12 JL

HEAVY DUTY
1 year warranty



Capacity

Power Input	: 2,000 W
Saw Blade Diameter	: 305 mm
Mitre Angles	: 0° - 45°
No-load Speed	: 1,500 rpm
Cutting Capacity (Square)	: 100 X 100 mm
(Round)	: 115 mm
Weight	: 20 kg

Spare Parts

Carbon Brush	1 607 014 171
Armature	1 609 B04 679
Coil	1 609 B00 115
Switch	1 609 B05 400

Jigsaw

GST 700



Capacity

Power Input	: 500 W
In Wood	: 70 mm
In Steel	: 6 mm
No-load Stroke Rate	: 1,450 - 3,200 spm
Weight	: 2.1 kg

GST 90 BE



NEW!



Capacity

Power Input	: 650 W
In Wood	: 90 mm
In Aluminium	: 20mm
No-load Stroke Rate	: 500 - 3,100 spm
Weight	: 2.6 kg

Cut off Machine

GCO 220 (Also available in 110V)



Capacity

Power Input	: 2,200 W
No-load Speed	: 3,800 rpm
Disc Diameter	: 355 mm
Blade Bore Size	: 25.4 mm
Weight	: 15 kg

GCO 14-24 J (Soft Start)

HEAVY DUTY
1 year warranty



Capacity

Power Input	: 2,400 W
Saw Blade Diameter	: 355 mm
Saw Blade Bore	: 25.4 mm
No-load Speed	: 3,800 rpm
Voltage	: 230 / 240 V
Weight	: 18.1 kg

Spare Parts

Carbon Brush	1 607 014 171
Armature	1 609 B03 638
Coil	1 609 B00 149

Table Saw

GTS 10 J

HEAVY DUTY
1 year warranty



Capacity

Power Input	: 1,800 W
Saw Blade Diameter	: 254 mm
Bevel Setting	: 47° L / 2° R
Cutting Capacity (Right)	: 460
(Left)	: 210
Weight	: 26 kg

Spare Parts

Carbon Brush	2 610 018 332
Coil	1 609 203 K86
Armature	1 619 P03 278
Switch	2 610 016 997

GTS 254



NEW!



Capacity

Power Input	: 1,800 W
Saw Blade Diameter	: 254 mm
No-load Speed	: 4,300 rpm
Incline Setting	: 45° L / 0° R
Cutting Height 90°	: 80 mm
45°	: 55 mm
Weight	: 24.4 kg

Compound Mitre Saw

GCM 10 MX

HEAVY DUTY
1 year warranty



Capacity

Power Input	: 1,700 W
Blade Size	: 255 mm
Arbour Size	: 25.4 mm
No-load Speed	: 4,800 rpm
Max Mitre	: 45° L / 52° R
Max. Cutting Capacity	: 89 x 89 mm
Weight	: 13.5 kg

Spare Parts

Carbon Brush	1 619 PA7 057
Armature	1 619 PA7 056
Coil	1 619 PA6 835

Mitre Saw Stand

GTA 2600

NEW!



Capacity

Length of work bench	: 2,600 mm
Dimensions of table when folded up	: 820 mm
Height of work bench	: 947 mm
Max. Load Capacity	: 160 kg
Weight	: 19.6 kg

Table Saw Stand

GTA 600
(0 601 B22 002)



Capacity

Table Height	: 602 mm
Max. Length Extension	
Unfolded	: 450 x 520 (D x L)
Max. Load Capacity	: 60 kg
Weight	: 6.3 kg

*GCM 12 GDL

HEAVY DUTY
1 year warranty



Capacity

Power Input	: 2,000 W
Blade Size	: 305 mm
Arbour Size	: 30 mm
No-load Speed	: 3,800 rpm
Max. Mitre	: 52° L / 60° R
Cutting Capacity	: 104 x 341 mm
Weight	: 32.1 kg

Planer

GHO 10-82
(*Also Available in 110V)

HEAVY DUTY
1 year warranty



Capacity

Power Input	: 710 W
Planing Width	: 82 mm
Planing Depth	: 0 - 3.0 mm
No-load Speed	: 16,500 rpm
Weight	: 2.5 kg

Spare Parts

Carbon Brush	1 607 031 222
Planing Knife	2 609 110 357
V-Belt	2 609 100 410

Planer

GHO 6500



Capacity	
Power Input	: 650 W
No-load Speed	: 16,500 rpm
Adjustable Chip Thickness	: 0 - 2.6 mm
Adjustable Rebating Depth	: 0 - 9 mm
Diameter (L x H x W)	: 280 x 140 x 158 mm
Weight	: 2.8 kg

Spare Parts

Planing Knife	2 609 110 357
V-Belt	2 609 100 410

Foam Cutter

GSG 300



1 year warranty



Capacity	
Power Input	: 350 W
Cutting Capacity	: 300 mm
No-load Stroke Rate	: 3,200 spm
Weight	: 1.6 kg

Spare Parts

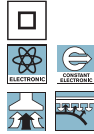
Carbon Brush	1 607 014 17J
Base Plate	2 608 000 908
Switch	2 607 200 286

Eccentric Sander

GEX 125-1 AE



1 year warranty



Capacity	
Power Input	: 250 W
Oscillating Circuit	
Diameter	: 2.5 mm
Orbit Rate	: 15,000 - 24,000 opm
Sanding Plate	: 125 mm
No-load Speed	: 7,500 - 12,000 rpm
Weight	: 1.3 kg

Spare Parts

Carbon Brush	2 609 120 199
Switch	1 607 200 190
Dust Container	2 609 199 176
Bearing Flange	2 609 100 862
Backing Pad	2 609 100 900

Orbital Sander

GSS 140



Capacity	
Power Input	: 220 W
No-load Speed	: 14,000 rpm
Orbital Stroke Rate	: 28,000 opm
Orbit Diameter	: 1.5 mm
Weight	: 1.2 kg

GSS 2300



Capacity	
Power Input	: 190 W
No-load Speed	: 12,000 rpm
Orbital Stroke Rate	: 24,000 opm
Orbit Diameter	: 2 mm
Weight	: 1.5 kg

*GSS 280 AE



1 year warranty



Capacity	
Power Input	: 330 W
Oscillating Circuit	
Diameter	: 2.4 mm
Orbit Rate	: 11,000 - 22,000 opm
Sanding Plate	: 114 mm
No-load Speed	: 5,500 - 11,000 rpm
Weight	: 2.6 kg

Spare Parts

Carbon Brush	1 607 031 222
Sander Plate	2 608 000 168
Switch	2 607 200 260

GSS 280 AVE (Indent)



1 year warranty



Capacity	
Power Input	: 350 W
Oscillating Circuit	
Diameter	: 2.4 mm
Orbit Rate	: 16,000 - 22,000 opm
Sanding Plate	: 114 mm
No-load Speed	: 8,000 - 11,000 rpm
Weight	: 2.75 kg

Spare Parts

Carbon Brush	1 607 031 222
--------------	---------------

Polisher

GPO 12 CE



1 year warranty



Capacity	
Power Input	: 1,250 W
Polishing Disc Diameter	: 180 mm
Thread of	
Polishing Spindle	: M14
Tool Length	: 450 mm
No-load Speed	: 750 - 3,000 rpm
Weight	: 2.5 kg

Spare Parts

Carbon Brush	1 607 014 176
Speed Governor	1 607 233 256
Switch	1 619 P09 841
Armature	1 619 P09 115

GPO 950



Capacity	
Power Input	: 950 W
Adaptor Size	: M14 / M16
Rubber Sanding Plate,	
Diameter	: 180 mm
Variable Speed	: 600 - 2,100 rpm
Weight	: 2.3 kg

GBL 620



Capacity	
Power Input	: 620 W
No-load Speed	: 16,000 rpm
Air Volume	: 3.5 m³ / min
Weight	: 1.7 kg

GBL 800 E
(Only Available in 110V)



1 year warranty



Capacity	
Power Input	: 800 W
No-load Speed	: 16,000 rpm
Air Volume	: 4.5 m³ / min
Weight	: 1.8 kg

Spare Parts

Carbon Brush	1 604 321 129
Speed Governor	1 607 233 348
Switch	2 607 200 637
Armature	1 604 010 A58
Coil	1 604 220 439

GBL 82-270



1 year warranty



Capacity	
Power Input	: 820 W
No-load Speed	: 0 - 16,000 rpm
Air Volume	: 0 - 4.5 m³ / min
Weight	: 1.8 kg

Belt Sander

GBS 75 A

HEAVY DUTY
1 year warranty



Capacity	
Power Input	: 710 W
No-load Belt Speed	: 300 m/min
Sanding Surface	: 75 x 130 mm
Belt Size	: 75 x 533 mm
Weight	: 3.2 kg

Spare Parts

Carbon Brush	1 607 031 222
Belt	2 604 736 010

Hot Air Gun

GHG 18-60

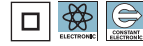
HEAVY DUTY
6 months warranty



Capacity	
Power Input	: 1,800 W
Temperature	: 50 / 400 / 600°C
Air Flow	: 250 / 350 / 500 l/min
Weight	: 0.52 kg

GHG 20-63 Kit
(Also Available in 110V)

HEAVY DUTY
6 months warranty



Capacity	
Power Input	: 2,000 W
Temperature	: 50 - 630°C
Air Flow	: 150 / 300 / 500 l/min
Weight	: 0.65 kg

Mini Router / Trimmer

GOF 130

6 months Warranty

NEW!



Capacity	
Power Input	: 1,300 W
No-load Speed	: 11,000 - 28,000 rpm
Bit Holder	: 1/4" & 8 mm
Stroke	: 55 mm
Weight	: 3.5 kg

GKF 550

6 months Warranty



Capacity	
Power Input	: 550 W
Collet	: 1/4"
No-load Speed	: 33,000 rpm
Weight	: 1.4 kg

Wet & Dry Vacuum Cleaner

GAS 15 / 15 PS

HEAVY DUTY
1 year warranty



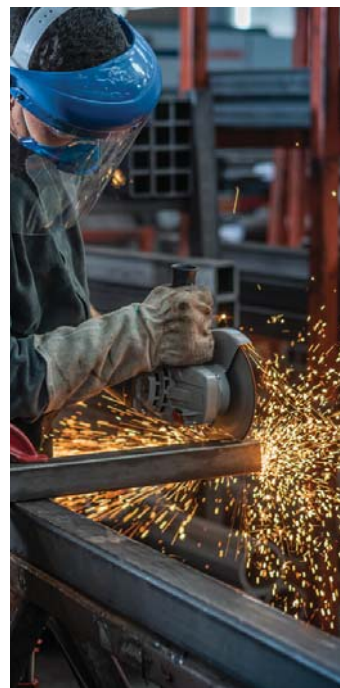
Capacity	
Power Input	: 1,100 W
Container (gross/net)	: 15 / 8 litre
Air Flow Max.	: 33 l/sec
Max. Vacuum Pressure	: 22 kPa
Weight	: 6 kg
- Semi-automatic filter cleaning system, - 2 in 1: vacuuming and blowing	

GAS 12-25

HEAVY DUTY
1 year warranty



Capacity	
Power Input	: 1,250 W
Container (gross/net)	: 25 / 21 litre
Air Flow Max.	: 63 l/sec
Max. Vacuum Pressure	: 20 mpa
Weight	: 10 kg
- Semi-automatic filter cleaning system, - 2 in 1: vacuuming and blowing	





Dust Free Solution

<p>Dust Extraction Guard (For 4" Grinder) 2 608 000 629</p>	
<p>Dust Extraction Guard (For 5" Grinder) 2 605 510 224</p>	
<p>GDE 125 FC-T (For 5" Grinder) 1 600 A00 3DK</p>	
<p>GDE 24 (GSB & GBH up to 24 mm ø) 1 600 A01 M9V</p>	
<p>GDE 68 (Up to 60 mm ø) 1 600 A00 1G7</p>	
<p>GDE 162 (Up to 162 mm ø) 1 600 A00 1G8</p>	
<p>GDE 16 1 600 A00 15Z</p>	
<p>GDE MAX (5 kg ~ 11 kg Demolition Hammer) 1 600 A00 1G9</p>	
<p>GDE HEX (16 kg Demolition Hammer) 1 600 A00 1GA</p>	
<p>GDE 18 V-16 Dust Extractor 1 600 A00 51M</p>	
<p>Dust Adaptor (GKS 600 / 7000) 2 608 000 563</p>	

Cordless Optical Scope

Laser Rangefinder

GIC 120 C



Capacity

Display Size	: 3.5"
Display Resolution	: 320 x 240 px
Dia. of Camera Head	: 8.5 mm
Length of Camera Cable	: 120 cm
Batteries	: 4 x 1.5V LR6(AA) / 10.8 V or 12 V Li-ion Battery
Weight	: 0.64 kg

GLM 30



Capacity

Laser Diode	: 635 nm, <1mW
Measuring Range	: 0.15 - 30 m
Measuring Accuracy	: ± 2 mm
Measuring Units	: m/cm, ft/inch
Batteries	: 2 x 1.5 V LR03 (AAA)
Weight	: 0.1 kg

GLM 40



Capacity

Laser Diode	: 635 nm, <1mW
Measuring Range	: 0.15 - 40 m
Measuring Accuracy	: ± 2 mm
Memory Capacity	: 10
Measuring Units	: m/cm, ft/inch
Batteries	: 2 x 1.5 V LR03(AAA)
Weight	: 0.1 kg

GLM 50 C



Capacity

Laser Diode	: 635 nm, <1mW
Measuring Range	: 0.05 - 50 m
Measuring Accuracy	: ± 1.5 mm
Tilt Sensor Range	: 0° - 360°
Measuring Units	: m/cm, ft/inch
Batteries	: 2 x 1.5 V LR03(AAA)
Memory Capacity	: 30
Weight	: 0.1 kg

GLM 500



Capacity

Laser Diode	: 635 nm, <1mW
Measuring Range	: 0.05 - 50 m
Measuring Accuracy	: ± 1.5 mm
Tilt Sensor Range	: 0° - 360°
Measuring Units	: m/cm, ft/inch
Batteries	: 2 x 1.5 V LR03 (AAA)
Memory Capacity	: 20
Weight	: 0.1 kg

GLM 50-23 G



Capacity

Laser Diode	: 515 nm, <1mW
Measuring Range	: 0.05 - 50 m
Measuring Accuracy	: ± 1.5 mm
Tilt Sensor Range	: 0° - 360°
Measuring Units	: m/cm/mm, ft/inch
Batteries	: 2 x 1.5 V LR6 (AA)
Memory Capacity	: 30
Weight	: 0.2 kg

GLM 50-27 CG



Capacity

Laser Diode	: 515 nm, <1mW
Measuring Range	: 0.05 - 50 m
Measuring Accuracy	: ± 1.5 mm
Tilt Sensor Range	: 0° - 360°
Measuring Units	: m/cm/mm, ft/inch
Batteries	: 2 x 1.5 V LR6 (AA)
Memory Capacity	: 30
Weight	: 0.2 kg

GLM 80



Capacity

Laser Diode	: 635 nm, <1mW
Measuring Range	: 0.05 - 80 m
Measuring Accuracy	: ± 1.5 mm
Measuring Units	: m/cm, ft/inch
Batteries	: Lithium-Ion
Voltage	: 3.7 V
Weight	: 0.14 kg

GLM 100



Capacity

Laser Diode	: 635 nm, <1mW
Measuring Range	: 0.05 - 100 m
Measuring Accuracy	: ± 1.5 mm
Measuring Units	: m/cm, ft/inch
Batteries	: Lithium-Ion
Voltage	: 3.7 V
Weight	: 0.14 kg

GLM 150 C



Capacity

Laser Diode	: 635 nm, <1mW
Measuring Range	: 0.08 - 150 m
Measuring Accuracy	: ± 1.5 mm
Measuring Units	: m/cm, ft/inch
Batteries	: 3 x 1.5 V LR06 (AA)
Tilt Sensor Range	: 0° - 360°
Weight	: 0.23 kg

GLM 250 VF



Capacity

Laser Diode	: 635 nm, <1mW
Measuring Range	: 0.05 - 250 m
Measuring Accuracy	: ± 1.0 mm
Measuring Units	: m/cm, ft/inch
Batteries	: 4 x 1.5 V LR03 (AAA)
Weight	: 0.24 kg

Detector

D-tect 120



Able to Detect PPR* Pipes!

Capacity

Detection Mode	: Universal, Concrete, Drywall
Detection Object	: Ferrous metals, non-ferrous metals, live cables, wooden objects and *water-filled plastic pipes
Max. Detection Depth	: 120 mm
Accuracy	: ± 10 mm
Power Supply	: 4 x 1.5 V LR6(AA)
Weight, approx	: 0.5 kg

Detector

GMS 120



Capacity

Max. Measuring Depth	: 120 mm
Live cables	: 50 mm
Wooden beams	: 38 mm
Metal (magnetic)	: 120 mm
Metal (non-magnetic)	: 80 mm
Batteries	: 1 x 9 V 6LR61
Weight	: 0.27 kg

Thermo Detector

GIS 1000 C



Capacity

Resolution of Infrared Sensor	: 635 nm, <1mW
Working Range	: 0.1 - 5 m
Temperature Range	: -40°C to + 1000°C
Measuring Accuracy	: ± 1.0°C (0°C - 100°C)
Batteries	: 4 x 1.5V LR6(AA) / 10.8V or 12V Li-ion Battery
Relative Humidity	: 0 - 100 %
Accuracy	: ± 2 %
Storage Medium	: 200 Images
Weight	: 0.56 kg

GTC 400 C



Capacity

Resolution of Infrared Sensor	: 160 x 120
Temperature Range	: - 10°C to + 400°C
Measuring Accuracy	: ± 3.0°C
Batteries	: 4 x 1.5V LR6(AA) / 10.8V or 12V Li-ion Battery
Weight	: 0.54 kg

GIS 500



Capacity

Laser diode	: 635 nm
Laser Class	: 2
Operating Temperature	: - 5°C - 50°C
Storage Temperature	: -20°C - +70°C
Batteries	: 2 x 1.5 V LR6(AA)
Weight	: 0.2kg

Line Laser

GCL 2-15 G



Capacity

Laser diode: Line	: 500 - 540 nm, < 10 mW
Point	: 630 - 650, < 1 mW
Working Range	: 15 m
Working range of plumb point	: 10 m (up and down)
Self-leveling range	: ± 4°
Leveling Accuracy	: ± 0.3mm / m
Tripod Mount	: 1/4", 5/8"
Batteries	: 3 x 1.5 V LR6(AA)
Weight	: 0.49 kg

GLL 30 G



Capacity

Laser Diode	: 500 - 540 nm, <5mW
Working Range	: 10 m
Leveling Accuracy	: ± 0.8 mm / m
Self-levelling Range	: ± 4°
Tripod Mount	: 1/4"
Batteries	: 2 x 1.5 V LR6(AA)
Weight	: 0.25 kg

GCL 2-50 CG



Capacity

Laser diode: Line	: 500 - 540 nm, < 10 mW
Point: 630 - 650, < 1 mW	
Working Range	: 20 m (50 m with Receiver LR 7)
Working Range of plumb point	: 10 m (up and down)
Leveling Accuracy	: ± 0.3 mm / m
Self-levelling Range	: ± 4°
Tripod Mount	: 1/4"
Batteries	: 4 x 1.5V LR6(AA) / 10.8V or 12V Li-ion Battery
Weight	: 0.58 kg

GLL 3-15 X



Capacity

Laser Diode	: 630 - 650 nm, <1mW
Working Range	: 15 m
Working range of plumb point	: 5 m
Leveling Accuracy	: ± 0.2 mm / m
Self-levelling Range	: ± 3°
Tripod Mount	: 5/8" on rotation mount
Batteries	: 4 x 1.5 V LR6(AA)
Weight	: 0.54 kg

Spare Parts

Rotation mount	1 618 C01 11X
----------------	---------------

GLL 5-50 X



Capacity

Working Range	: 15 m
Working Range With Receiver LR 6 / LR 7	: 5 - 50 m
Working Range of Plumb Point	: 5 m
Leveling Accuracy*	: ± 0.2 mm / m
Self-levelling Range	: ± 3°
Tripod Mount	: 5/8" on rotation mount
Batteries	: 4 x 1.5 V LR6(AA)
Weight	: 0.54 kg

Spare Parts

Rotation mount	1 618 C01 11X
----------------	---------------

GLL 3-80



Capacity

Laser Diode	: 630 - 650 nm, <10mW
Working Range	: 30 m
Working Range With Receiver LR 6 / LR 7	: 120 m (diameter)
Leveling Accuracy	: ± 0.2 mm / m
Self-levelling Range	: ± 4°
Tripod Mount	: 1/4" & 5/8"
Plane	: 3
Batteries	: 4 x 1.5 V LR6(AA)
Weight	: 0.82 kg

GLL 3-60 XG



Capacity

Laser Diode	: 500 - 540 nm, <10mW
Working Range	: up to 30 m
Working Range with Receiver, Value	: 60 m
Leveling Accuracy	: ± 0.3 mm / m
Self-levelling Range	: ± 3°
Tripod Mount	: 1/4" & 5/8"
Batteries	: 4 x 1.5 V LR6(AA)
Weight	: 0.82 kg

GLL 3-80 CG



Capacity

Laser Diode	: 500 - 540 nm, <10mW
Working Range	: 30 m
Working Range With Receiver LR 7	: 120 m (diameter)
Leveling Accuracy	: ± 0.2 mm / m
Self-levelling Range	: ± 4°
Batteries	: 4 x 1.5V LR6(AA) / 10.8V or 12V Li-ion Battery
Tripod Mount	: 1/4" & 5/8"
Weight	: 0.9 kg

Point Laser

GPL 5G

NEW!



Capacity

Laser Diode	: 500 - 540 nm, <1mW
Operating Temperature	: -10 - 45°C
Storage Temperature	: -20 - 70°C
Working Range	: up to 30 m
Accuracy	: ± 0.35 mm / m
Self-levelling Range	: ± 4°
Tripod Mount	: 1/4"
Batteries	: 2 x 1.5 V LR6(AA)
Weight	: 0.35 kg

Electronic Line Laser

GLL 5-40 E



Capacity

Laser Diode	: 635 - 650 nm, <1mW
Working Range	: 15 m
Working Range With	
Receiver LR 5	: 40 m
Leveling Accuracy	: ± 0.1 mm / m
Self-levelling Range	: ± 3°
Tripod Mount	: 5/8"
Batteries	: 4 x 1.5 V LR6(AA)
Weight	: 1.1 kg



GLL 8-40 E



Capacity

Laser Diode	: 635 - 650 nm, <1mW
Working Range	: 15 m
Working Range With	
Receiver LR 5	: 40 m
Leveling Accuracy	: ± 0.1 mm / m
Self-levelling Range	: ± 3°
Tripod Mount	: 5/8"
Batteries	: 4 x 1.5 V LR6(AA)
Weight	: 1.1 kg



Combi Laser

GCL 25



Capacity

Laser Diode	: 635 nm, <1mW
Working Range	: 10 m
Levelling Accuracy	: 0,3 mm/m
Self-levelling Range	: ± 4°
Batteries	: 4 x 1.5 V LR06(AA)
Tripod Mount	: 1/4" & 5/8"
Weight	: 0.58 kg

Rotation Laser Level

GRL 300 HVG



Capacity

Laser Diode	: 532 nm, <5mW
Working Range With	
Receiver LR 1G	: 150 m (radius)
Leveling Accuracy	: ± 0.1 mm / m
Tripod Mount	: 5/8"
Batteries	: 2 x 1.5 V LR20(D)
Weight	: 1.8 kg

GRL 350 HV



Capacity

Laser Diode	: 630 - 650 nm, <5mW
Working Range	: up to 60 m
Self-Leveling Range	: ± 0.5°
Tripod Mount	: 5/8"
Batteries	: 2 x 1.5 V LR20(D)
Weight	: 1.8 kg

Angle Measurer

*GAM 220

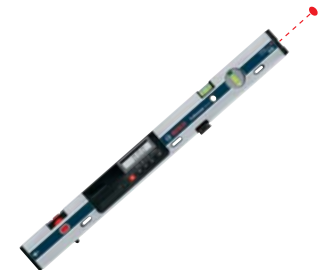


Capacity

Measurement Range	: 0 - 220°
Electronics Measurement	
Accuracy, Angles	: ±0.1°
Electronics Measurement	
Accuracy, Vials	: ±0.05°
Power Supply	: 4 x 1.5 V LR6(AA) or 4 x 1.2 V HR6(AA)
Weight	: 1.3 kg

Digital Inclinometer

*GIM 60 L



Capacity

Laser Diode	: 650nm, <1mW
Measurement Range	: 0° - 360°
Electronics Measurement	
Accuracy 0° / 90°	: ±0.05°
Electronics Measurement	
Accuracy at 1° / 89°	: ±0.1°
Laser Working Range	: 30 m
Laser Accuracy	: ±1mm / m horizontal levelling
Batteries	: 4 x 1.5 V LR6(AA) or 4 x 1.2 V HR6(AA)
Weight	: 0.9 kg

*GIM 60



Capacity

Measurement Range	: 0 - 360° (4x90°)
Electronics Measurement	
Accuracy 0° / 90°	: ±0.05°
Electronics Measurement	
Accuracy at 1° / 89°	: ±0.2°
Electronics Measurement	
Accuracy, Vials	: ±0.057° = ±1 mm/m
Power Supply	: 1 x 9 V 6LR61
Batteries	: 4 x 1.5 V LR6(AA) or 4 x 1.2 V HR6(AA)
Weight	: 0.77 kg

*GIM 120



Capacity

Measurement Range	: 0 - 360°
Electronics Measurement	
Accuracy 0° / 90°	: ±0.05°
Electronics Measurement	
Accuracy at 1° / 89°	: ±0.2°
Electronics Measurement	
Accuracy, Vials	: ±0.057° = ±1 mm/m
Power Supply	: 4 x 1.5 V LR6(AA) or 4 x 1.2 V HR6(AA)
Weight	: 1.4 kg

Tripod

BT 150



Capacity

Work Height	: 55 - 157 cm
Tripod Thread	: 1/4"
Weight	: 1.3 kg

For DLE, GLM, GLL & GPL category

BT 150 (5/8")



Capacity

Work Height	: 52 - 154 cm
Tripod Thread	: 5/8"
Weight	: 1.1 kg

Tripod

BT 160



Capacity

Work Height	: 97 - 160 cm
Tripod Thread	: 5/8"
Weight	: 4.1 kg

For GRL & GOL category

BT 170 HD



Capacity

Work Height	: 107 - 165 cm
Tripod Thread	: 5/8"
Weight	: 5.5 kg

For GRL & GOL category

*BT 300 HD



Capacity

Work Height	: 122 - 295 cm
Tripod Thread	: 5/8"
Weight	: 7.5 kg

For GCL, GLL & GLM category

Measuring Rail

R 60



Capacity

Comes complete with	: Protective Case, Charger, Manufacturer's Certificate
Measuring Range	: 0 - 360°
Accuracy of inclinometer	: ± 0.2°
Audible Signals	: at 0° and 90°
Dimensions (L/W/H)	: 610 x 58 x 30 mm

For GLM 80

Telescopic Pole

*BT 350



Capacity

Max Height	: 140 - 350 cm
Weight	: 2.5 kg

For GLL & GPL category

Laser Receiver

LR 6



Capacity

Working Range	: 5 - 50 m
Measurement Accuracy, Fine	: ± 1 mm
Measurement Accuracy, Rough	: ± 3 mm
Compatible with Red Laser	: GLL 5-50 X
Power Supply	: 2 X 1.5 V LR03 (AAA)
Weight	: 0.12 kg

LR 7



Capacity

Working Range	: 5 - 50 m
Measurement Accuracy Fine	: ± 1 mm
Measurement Accuracy, Rough	: ± 3 mm
Compatible with Green and Red Laser	
Power supply	: 2 x 1.5 V LR6 (AA)
Weight, approx.	: 0.15 kg

Rotation Mount

RM 3



Capacity

Working Range (with RC 2)	: 20 m
Batteries	: 2 x 1.5 V LR03 (AAA)
Weight	: 0.46 kg

Universal Holder

BM 1



Capacity

Tripod Thread	: 1/4"
Weight	: 0.5 kg

For GLL, GPL & GLM category



High Pressure Washer

EasyAquatak 100



Capacity

Motor Output	: 1,100 W
Max. Pressure	: 100 bar
Max. Flow Rate	: 300 l/h
Max. Temp	: 40°C
Hose Length	: 3 m PVC
Voltage	: 230 / 240 V
Frequency	: 50 / 60 Hz
Weight	: 3.0 kg

EasyAquatak 110



Capacity

Motor Output	: 1,300 W
Pressure	: 110 bar
Flow Rate	: 330 l/h
Max. Temp	: 40°C
Hose Length	: 3 m PVC
Voltage	: 230 / 240 V
Frequency	: 50 / 60 Hz
Weight	: 3.8 kg

Spare Parts

Trigger	F 016 F05 280
Hose (6m)	F 016 800 360
Extension Hose (6m)	F 016 800 361
Lance	F 016 F05 017
3 in 1 Nozzle	F 016 800 508

UniversalAquatak 125



Capacity

Motor Output	: 1,500 W
Pressure	: 125 bar
Flow Rate	: 360 l/h
Max. Temp	: 40°C
Hose Length	: 5 m PVC
Weight	: 6.8 kg

UniversalAquatak 130



Capacity

Motor Output	: 1,700 W
Pressure	: 130 bar
Flow Rate	: 380 l/h
Max. Temp	: 40°C
Hose Length	: 6 m PVC
Weight	: 7.8 kg

AdvancedAquatak 150



Capacity

Motor Power	: 2,200 W
Pressure	: 150 bar
Flow Rate	: 480 l/h
Max. Temp	: 40°C
Hose Length	: 8 m PU
Weight	: 21.1 kg



High Pressure Cleaner

GHP 5-13 C



Capacity

Motor Power	: 2,300 W
Maximum Pressure	: 140 Bar
Maximum Flow Rate	: 520 l/h
Hose Length	: 8 m
Weight	: 16.5 kg

Spare Parts

Handle	F 016 L72 097
Jet Pipe	F 016 L72 098
Hose (9m)	F 016 F04 523

GHP 6-14



Capacity

Motor Power	: 2,600 W
Maximum Pressure	: 150 Bar
Maximum Flow Rate	: 650 l/h
Hose Length	: 10 m
Weight	: 25.6 kg

Spare Parts

Handle	F 016 L72 097
Jet Pipe	F 016 L72 179
Hose (9m)	F 016 F04 523



Bosch 110V Power Tools

Model	Description
GBH 2-23 RE	Rotary Hammer SDS Plus
GBH 2-26 RE	Rotary Hammer SDS Plus
GBH 5-40 D	Rotary Hammer SDS Max
*GBH 8-45 D	Rotary Hammer SDS Max
GBL 800 E	Blower
GCO 220	Cut Off Saw
*GDM 13-34	Marble Cutter
GDS 18 E	Impact Wrench
GGG 28 LC	Straight Grinder
GHG 20-63 kit	Heat Gun
*GHO 10-82	Planer
*GSA 120	Sabre Saw
GSB 10 RE	Impact Drill, 10 mm Chuck
GSB 16 RE	Impact Drill, 13 mm Chuck
GSH 5 X Plus	Breaker (17 mm Hex Shank)
*GSH 5 CE	Breaker SDS Max
GSH 9 VC	Breaker SDS Max
GSH 11 E	Breaker SDS Max
GSH 11 VC	Breaker SDS Max
GKS 190	7" Circular Saw
GST 25 M	Jigsaw
GWS 6-100	4" Grinder (100+6)
*GWS 11-125 P	5" Grinder Paddle / DMS
GWS 20-180	7" Grinder

Carbon Brush Guide

Effective 1st February 2021

Model	Carbon Brush Part No.	Price (SGD)
GWS 060, GWS 750-100, GWS 900-100 / S	1 607 031 223	\$ 2.80
GSR 180-LI, GSB 180-LI	1 607 000 CZ1	\$ 3.00
GSH 11 E, GSH 16-30	1 617 014 126	\$ 10.00
GSH 500, GBH 5-40 D, GSH 5 CE	1 617 014 138	\$ 10.00
GBH 2-26 RE / DRE / DFR, GBH 2-24 RE / DRE, GBH 3-28 DFR	1 617 000 525	\$ 8.00
GWS 20-180 / 230, GCO 220 / 2000, GWS 2200-180 H / 230 H	1 607 014 171	\$ 10.00
GWS 8-100 Z, GGS 28 C / LC, GPO 12 CE	1 607 014 176	\$ 7.00
GWS 13-125 CI, GWS 17-125 CI / 17-150 CI, GWS 18-125 L / 150 L	1 607 000 V37	\$ 7.50
GSB 16 RE (3 601 B28 1L0 - New), GBM 10 RE / 13 RE, GSB 10 RE / 13 RE	2 610 391 290	\$ 6.50
GSB 16 RE (3 601 B18 1L0 - Old)	2 604 337 059	\$ 9.00
GSB 16 RE (0 601 140 706 Oldest), GHO 10-82, GBS 75 A	1 607 031 222	\$ 5.50
GST 80 PBE, GST 25M, GGS 27	1 607 031 228	\$ 6.20
GSA 120, GKS 7000, GKS 600	1 619 P10 063	\$ 6.00
GWS 7-100, GOP 25 CE, GOP 30-28	1 619 P02 870	\$ 3.20
GBL 620, GBL 82-270, GBL 800 E	1 604 321 129	\$ 8.00
GEX 125-1 AE, GSS 230, GSS 1400	2 609 120 199	\$ 9.65
GST 65, GST 65 E, GST 54	2 604 321 919	\$ 6.00
CSB 470 RLE, CSB 550 RE, CSB 500 RE	1 607 031 239	\$ 6.20
GBH 4-32 DFR	1 614 321 079	\$ 12.00
GAS 15, GAS 15 PS, GAS 12-25	1 619 PA7 345	\$ 7.00
GDR / GDS / GDY 14.4 V-LI, GDR / GDS / GDY 18 V-LI	2 609 199 169	\$ 9.50
GSA 1100 E, GSA 1300 PCE	2 610 956 917	\$ 5.00
GBM 16-2 RE, GBM 23-2, GGS 6	3 607 014 012	\$ 14.00
GBH 8-45 D, GSH 9 VC	1 617 000 A50	\$ 16.00
GKS 190 (3 601 F23 0L0 New Type)	1 619 P06 346	\$ 9.90
GSG 300	1 607 014 17J	\$ 14.00
GCM 10 MX	1 619 PA7 057	\$ 26.50
GDM 121	1 619 PA4 025	\$ 3.10
GDS 18 E	1 619 PA2 438	\$ 11.00
GMR 1	2 609 120 149	\$ 9.70
GBH 36 V-LI	1 617 014 142	\$ 9.00
GSH 27 VC	1 617 000 425	\$ 37.00
GRW 12 E	1 607 014 17A	\$ 37.00
GST 90 BE	2 604 321 925	\$ 5.50
GDY 180-LI	1 607 014 18R	\$ 7.00
GHO 6500	2 609 120 398	\$ 11.00
GSS 140	1 619 PB3 111	\$ 3.00
GST 700	1 619 P13 476	\$ 4.00
GPO 950	1 619 PB1 971	\$ 3.00
GTS 10 J	2 610 018 332	\$ 17.00
GCM 12 GDL	2 610 021 311	\$ 15.00
GBM 50-2	1 619 PB4 295	\$ 33.00
GSH 11 VC	1 617 000 750	\$ 19.50
GDC 140	1 619 P20 377	\$ 4.00
GKS 140	1 619 PB4 042	\$ 8.00
GBH 180-LI	1 619 P14 345	\$ 9.00
GKF 550	1 619 PB3 047	\$ 5.00
GOF 130	1 619 PB5 455	\$ 3.50
GBH 7-46 DE	1 617 014 135	\$ 15.90

Price reduction.

Prices correct at time of printing and Bosch reserves the right to amend at its sole discretion without prior notice.



WARRANTY

This serves to inform all Bosch Power Tools are guaranteed against manufacturing defects for a period of 6 months from the registered date of purchase (**Bosch Measuring Tools, GHP Range High Pressure Cleaners and HEAVY DUTY Range Power Tools are entitled to 1 Year Warranty, except Bosch Hot Air Guns, Bosch Batteries and Bosch Chargers which are entitled to 6 months warranty. Terms and Conditions apply**).

This guarantee, however, does not cover damage caused by accident, misuse, unauthorised repairs, tampering, additions and modifications made to the tool in any manner.

保证

谨此通知阁下有关所有博世电动工具享有为期六个月之生产损坏保证，有效期从购买登记日算起。(博世电子测量器，博世 GHP 高压清洗机系列及博世 HEAVY DUTY 系列享有1年保证，除了博世热风机，博世电池和博世充电器享有6个月保证。附带条规)。

无论如何，上述保证并不包括有关电动工具因意外，错误使用、非授权维修、附加及修换或其他方式所造成的损坏及故障。



For further enquiries, please call **1 800 333 8 333**
 Mon - Fri 8.30am - 5.30pm
www.bosch-pt.com.sg

Key To Symbols

	Double Insulation		Electronic Control		Rotation Stop		Constant Electronic		Forward / Reverse Rotation		Overload Clutch		Distortion-resistant protective guard
	Spindle Lock		Saw Blade Pendulum Action		Dust Extraction		Bosch SDS System		SDS-Plus Tool Holder		Slim Grip		Lithium-Ion Technology
	SDS-Max Tool Holder		SDS-Plus Quick Exchange System		SDS-Max Quick Exchange System		SDS-Clic Quick Clamping System		Velcro Fastening		Inox For a perfect finish on stainless steel		Easy Fit
	Turbo Blower		Removable Cable		Torque Control		Restart Protection		Fine Depth Adjustment		Direct Cooling and Additional Air Inlets		Kick Back Stop
	Brushless Motor		Woodrazor		Turbo Power		Vibration Control		Auto-Lock		Laser Class 2		Laser Class 3R

While all care has been taken to ensure that the information contained in this publication is correct, no responsibility can be accepted for any inaccuracy. The Company reserves the right to alter or modify the information contained herein at any time in light of technical or other developments. Technical specification are valid under normal operating condition only. The company does not accept any responsibility for any misuse of the product and cannot be held liable for consequential damage.

NOTES



NOTES



**HEAVY
DUTY**

**1 year
warranty***



Full Warranty#!

Includes Wear & Tear Parts!

www.bosch-pt.com.sg

FREE Repair Costs!!



Robert Bosch (SEA) Pte Ltd

11 Bishan Street 21
Singapore 573943
Tel: (65) 6571 2772
Fax: (65) 6571 2784

For further enquiries, please contact

 **1 800 333 8 333**

Mon - Fri: 8.30am - 5.30pm

Authorised Service Centre:

Powerwell Service Centre Pte Ltd
4012 Ang Mo Kio Ave 10,
#01-02 Techplace 1, Singapore 569628
Tel: (65) 6452 1770 Fax: (65) 6452 1760
Email: ask@powerwellsc.com

* Bosch Heavy Duty Power Tools are entitled to 1-year warranty, except for hot air guns, batteries and chargers which are entitled to 6-months warranty.

Terms and Conditions apply.

Bosch reserves the right to amend the terms and conditions or withdraw the promotion at its sole discretion without prior notice.