

SIASUN Introduction

Agenda

- Introduction
- Industry Chain
 - Industrial Robot
 - Robotic Equipment
 - Intelligent Logistics
 - Mobile Robot
 - Automation Equipment
 - Service Robot
 - New Generation of Robot
- SIASUN Singapore Introduction

Introduction



General introduction



SIASUN Robot & Automation Co., LTD is a high-tech company named after the father of Chinese robot-- Mr.Jiang Xinsong. SIASUN was founded in 2000 and formerly known as national robots research center in Shenyang Institute of Automation, Chinese Academy of Sciences. In 2009, SIASUN joined into Growth Enterprise Market (GEM) of China as the first batch of companies. Now SIASUN is the nation's highest-level industry group with full industry chain, large-scale production line and enormous influence.

SIASUN Development History

2011 SIASUN Wisdom Park Foundation

Extension of whole industrial chain



2007 The batch exportation of products



2004 Products fill the domestic robots technology gap



2002 Foundation of the phase I Industrial Park

Today SIASUN has the most comprehensive robot production line



2009 First Robot stock in China

2006 Undertake a number of national scientific researches

2000 Formal establishment of SIASUN



1999 The initiator-- Institute of automation, Chinese Academy of Sciences

Performance in stocking market

The cumulative increase of share price reached 4800%, from 617 million RMB to 30000 million RMB. It has much greater performance than GEM. SIASUN has become one of the top three robotics enterprise and the first business growth in the robotic industry in the world.



Domestic layout



International layout



- Hong Kong, Singapore
- Thailand
- Japan
- North America

Overseas Customer



SIASUN products have been successfully exported to Europe, Asia and other more than 10 developed countries and regions. SIASUN successfully rewrites the history of the development of domestic robots in China.

SIASUN 新松

SIASUN 新松
超越期望 Beyond Expectation

Industry Chain



**Industrial
Robot**



**Robotic
Equipment**



**Intelligent
Logistics**



**Mobile
Robot**



**Automation
Equipment**



**Service
Robot**

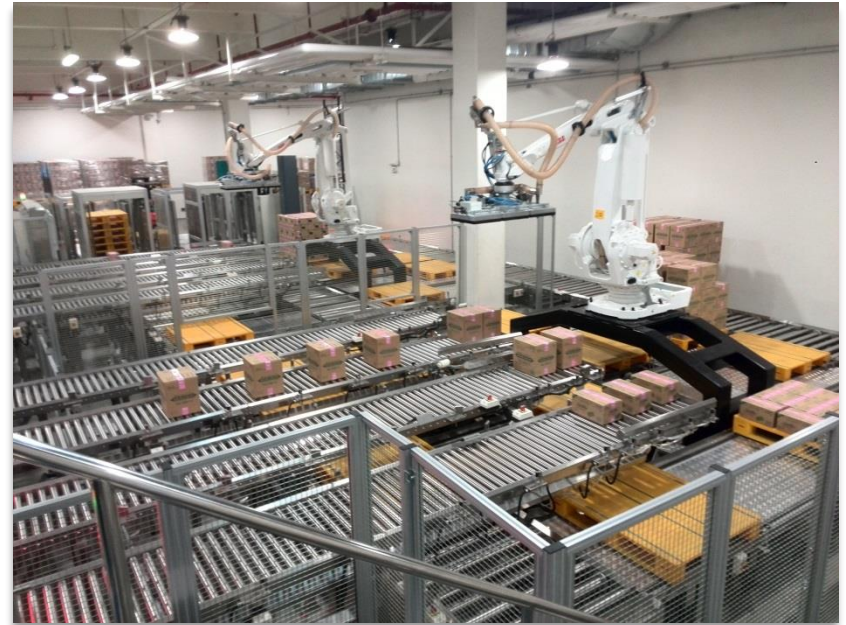
Comprehensive Industry Chain

Industrial Robot



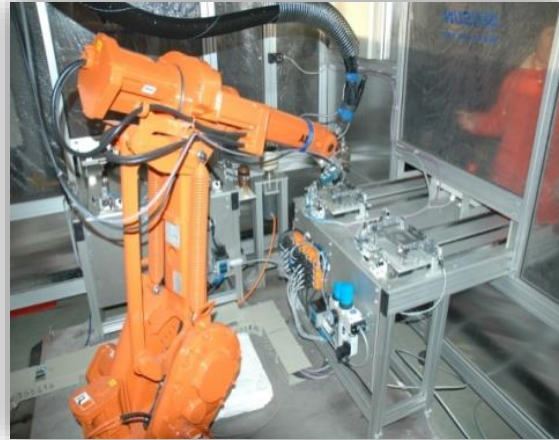
SIASUN brand Robots

Robotic Equipment



Palletizing Robots

Robotic Equipment



Welding Robots

Intelligent Logistics



AS/RS (Automatic Storage and Retrieval System)



Stacker Crane

Intelligent Logistics



Conveyor System



Stacking & unstacking device

Intelligent Logistics



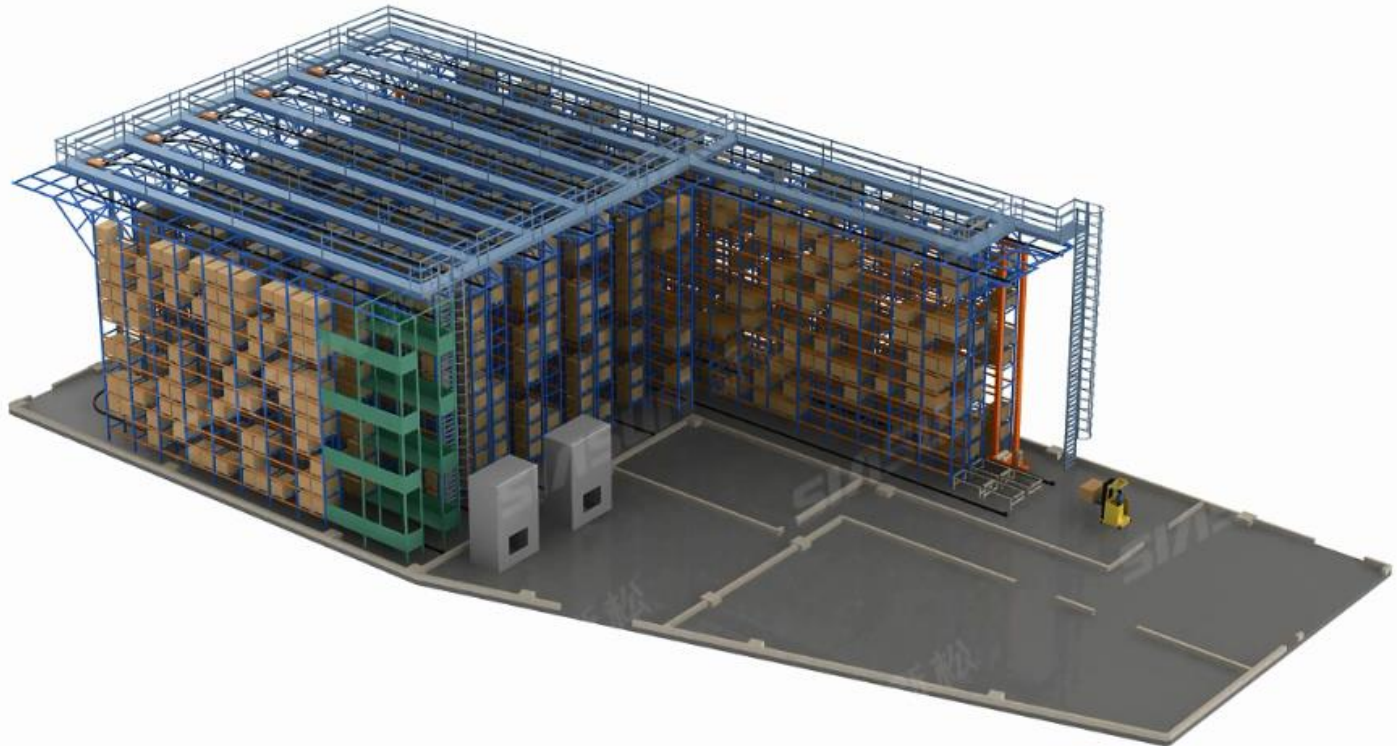
Shuttle System



Elevator System

Intelligent Logistics-Overseas

SIASUN 新松



- Singapore Thomson Line ASRS

Intelligent Logistics-Overseas



- RUSSIA LIOTECH LTD

Intelligent Logistics-Overseas



- INDIA AUROBINDO PHARMA LTD

Intelligent Logistics-Overseas



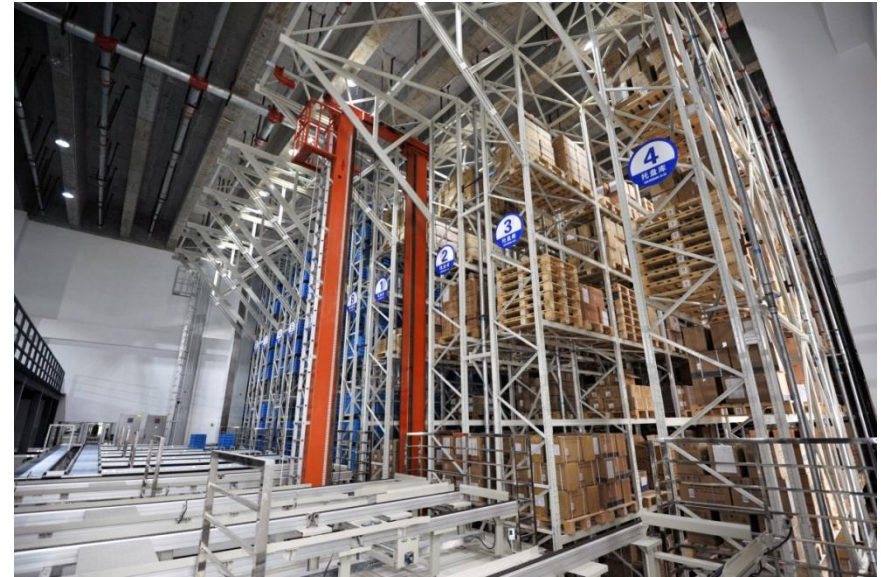
- Thailand Michelin (Installation phase)

Intelligent Logistics-Grid



- Shandong State Grid Company

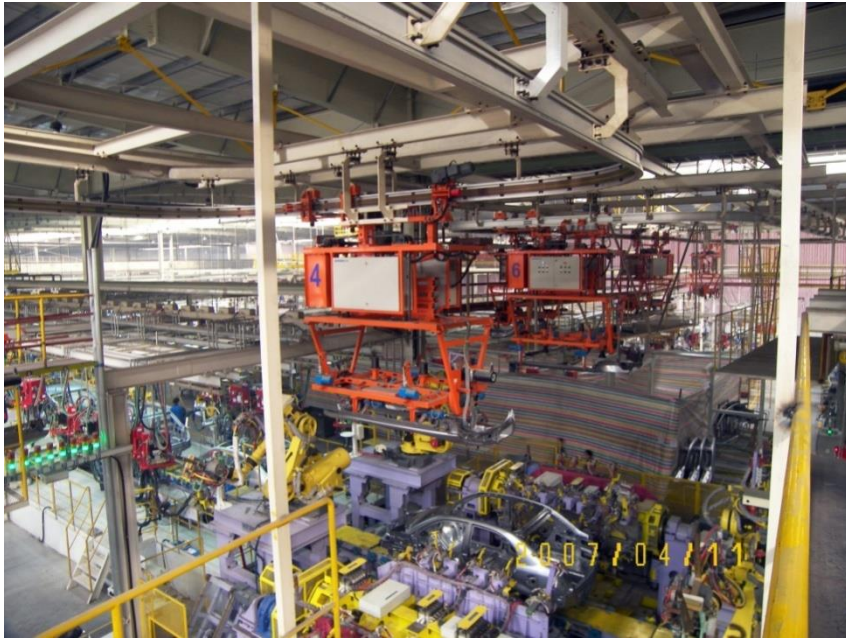
lane	10
Stacker Crane	10
Storage	94000 units
Loading Capacity	500kg



- Sichuan State Grid Company

lane	6
Stacker Crane	6
Storage	11520 units
Loading Capacity	500kg

Intelligent Logistics-Automobile



- Cherry automobile - shuttle car



- Weichai -conveyor and lifter

Intelligent Logistics-Space flight



- Xi'an aircraft group -AS/RS



- Shenyang Liming-AS/RS

Intelligent Logistics-Transportation



- Nanjing metro line 4 - AS/RS

lane	6
Stacker Crane	4
Storage	5640 units
Loading Capacity	1000kg



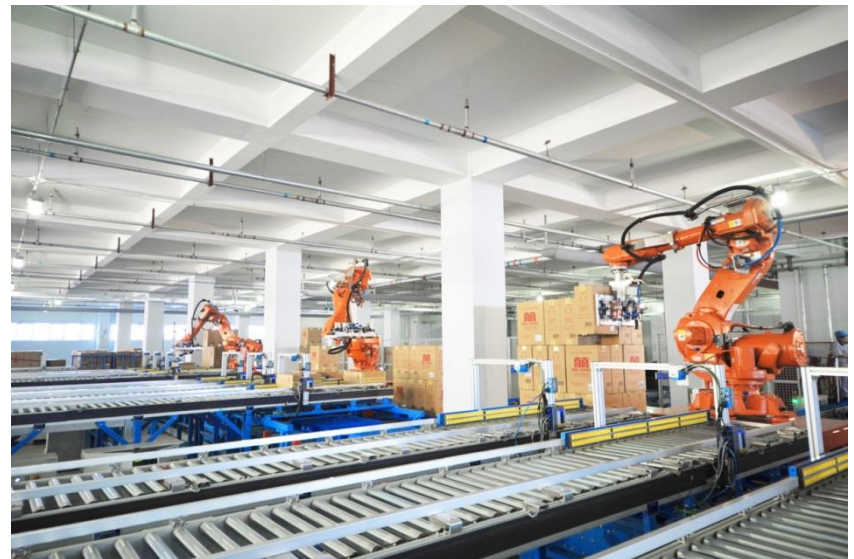
- Shenyang light rail -AS/RS

lane	3
Stacker Crane	3
Storage	336 units
Loading Capacity	1000kg

Intelligent Logistics-Tobacco



- Yanji tobacco stacking robot



- Tianjin Tobacco Stacking robot

Intelligent Logistics-Machinery



● Kunshan SANY AS/RS

lane	1
Stacker Crane	1
Storage	17 units
Loading Capacity	3000kg



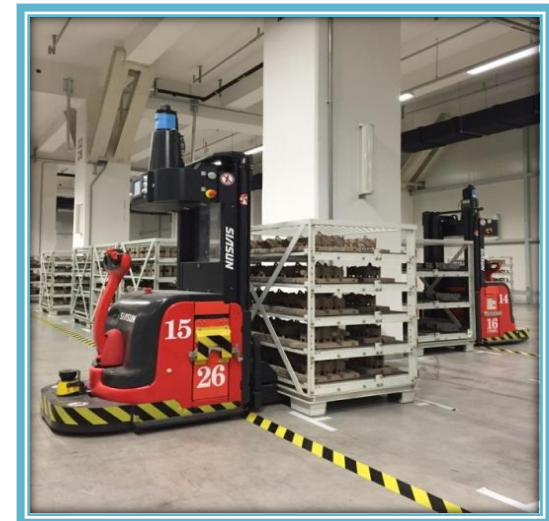
● BEL Shenyang AS/RS

lane	2
Stacker Crane	2
Storage	136 units
Loading Capacity	1000kg

Mobile Robot



Dual-lifter AGV
Car assembly(GM,Ford,Nissan)



Forklift AGV(BMW)

Mobile Robot



AMR(Autonomous mobile robot)
Loading capacity = 500 kg



AGC(Autonomous guided cart)
Towing capacity = 1000kg



Mobile Robot (Heavy duty)

Application: Storage, Manufacturing, Harbor, Airport, Hazardous site



Loading capacity = 40 tons



Loading capacity = 75 tons



Loading capacity = 15 tons



Lifting capacity = 3.5 tons

Function	Transferring chassis of CRH
Driving method	Dual steering wheels
Navigation method	Magnetic tape
Moving method	All direction
Loading capacity	3.6 tons
Max line speed	36m/min
Max turning speed	20m/min
Positioning accuracy	±5mm
Guiding tolerance	±10mm
Safety method	Laser anti collision sensor (SICK)
Working sites	Shanghai, Wuhan, Tianjin, Tangshan

Mobile Robot (Heavy duty)



Function	Transferring chassis of CRH
Driving method	Four steering wheels
Navigation method	Magnetic tape
Moving method	All direction
Loading capacity	12 tons
Max line speed	30m/min
Max turning speed	15m/min
Positioning accuracy	±5mm
Guiding tolerance	±10mm
Safety method	Laser anti collision sensor (SICK)
Working sites	Guangzhou

Mobile Robot (Heavy duty)



Function	Mobile welding platform
Driving method	Four steering wheels
Navigation method	Magnetic tape
Moving method	All direction
Loading capacity	10 tons
Max line speed	30m/min
Max turning speed	15m/min
Positioning accuracy	±5mm
Guiding tolerance	±10mm
Safety method	Laser anti collision sensor (SICK)
Working sites	Zoomline Heavy Industry

Mobile Robot (Heavy duty)



Mobile Robot



Composed Robot
(Sandisk)



Surveillance Robot



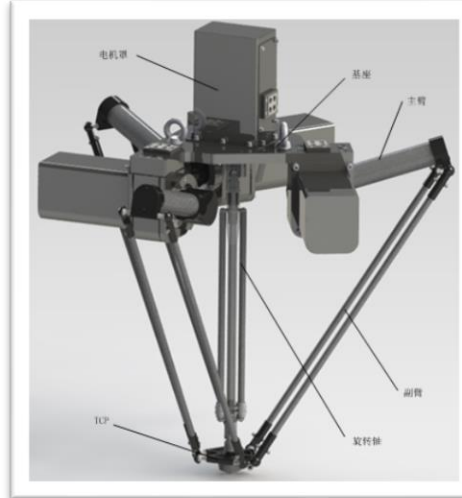
Mobile Robot (Outdoor)



Outdoor AGV is able to work under the following condition:

Navigation	Gyroscope + Transponder
Winter	Outdoor temperature is -20 degrees
Winter	Road surface icing thickness is 10mm
Rainy season	Water level on the road is 80mm
Windy season	Wind speed is 74km/hour
Dragging capacity	4 tons

Automation Equipment



Service Robot



Service Robot



Medical care Robot



Cleaning Robot

New Generation of Robot



Part of Our Customers (Mobile Robots)

Automobile Body Chassis Marriage

Industry

Shenyang Brilliance Auto Co., Ltd
Guangxi Automobile Group
Chongqing Changan Ford Co., Ltd
Hainan Automobile Co., Ltd
SAIC Chery Group
Shenyang Zhongshun Automobile
Hunnan Changfeng Automobile Co., Ltd
SAIC Wuling Automobile Co., Ltd
FAW Automobile Group
SAIC-GM (Shenyang)
Changan Ford Automobile Co., Ltd
Weichai Power Co., Ltd
SAIC-GM
Baoding Greatwall Automobile Co., Ltd
SAIC-GM Wuling Automobile Co., Ltd
SAIC Automobile Co., Ltd
Land Rover China
Shanghai Maple Automobile
Changan Ford & Mazda Automobile
Geely Group (Zhejiang)
Weibo Transmission Machine Co., Ltd (Chengde)
Lotus Automobile

Haima Automobile (Zhengzhou)
Huatai Automobile Group (Ordos)
Hangzhou Lotus Automobile
FAW Group (Tianjin)
Geely Automobile (Cixi)
Dongfeng Motor Company Ltd
Foton Automobile
Chery Automobile (Dalian)
FAW Haiman Automobile Co., Ltd
SMA Shanghai
Shanxi Changzhi Automobile parts Co.
Chongqing Lifan Automobile
Chengde Tianbao Machinery Ltd.
Shenyang Brilliance Auto Co., Ltd

Diesel Machine Testing

Workshop Transport Industry

Guangxi Yulin Diesel Group
SDEC Co., Ltd (Dalian)
Weichai Power Co., Ltd
Anhui Tianli Power Co., Ltd
China Heavy Duty Truck Group

Automobile Parts Industry

China Fast Gear Co., Ltd (Xi'an)
Weichai Power Co., Ltd
China Heavy Duty Truck Group (Da Tong)

Dongfeng Gear Box Co., Ltd
FAW Gear Box Co., Ltd (Changchun)
Dongfeng Automobile Co., Ltd
Fast Gear Co., Ltd (Baoji)

Tobacco Industry

Shanghai Tobacco
Chongqing Tobacco
Jilin Tobacco

Power Industry

Xian XD Switchgear Electric Co., Ltd
North China Grid Company Ltd
Chongqing Power Science Test Academy
Taian Power Company
Liaocheng Power Company
Xian Power Supply Bureau Center
Power Supply Bureau (Hu He Hao Te)
Tianjin Power Supply Company Centre
Zhengzhou Sanhui Electric Ltd

Medicine & Food Industry

Shandong Fruida
Tianjin Tasly
Mengniu Dairy

Engine & Hi-speed Rail

Guangzhou Railway Bureau Motor Car Checking Base
Baichuan Co., Ltd
Herbin High Power Car Checking Base
Wuhan Railway Bureau Motor Car Checking Base
Tianjin Bureau High Power Base
Shanghai Railway Bureau High Power Check Base

Petrochemical Industry & Exploration Industry

Kunming Sino- Platinum Metals Catalyst Co., Ltd
Zhuhai Cellulose Fibers Co., Ltd
Kunming Cellulose Fibers Co., Ltd

Education & Training Industry

Xian University of Technology
Shanghai Fuan Automation Co., Ltd
Wuhan University of Technology Logistic Engineering College
Zhejiang Technical Institute of Economics
Papermaking & Printing Industry.....

Other Industry

AVIC Hongdu

SIASUN 新松

Automated Guided Vehicle Industry

International application Customers (Mobile Robots)

No.	Project	Year	AGV Qty	Plant location
1	GM Cactus Phase I	2007	9	Mexico SLP
2	GM Cactus Phase II	2011	3	Mexico SLP
3	GM Blue Ocean	2008	6	Russia St.Petersburg
4	GM Oshawa Phase I	2007	35	Canada Oshawa
5	GM Oshawa phase II	2010	12	Canada Oshawa
6	GMDAT Phase I	2008	11	Korea Inchon
7	GMDAT Phase II	2008	15	Korea Inchon
8	Ford India	2009	8	India Chennai
9	GM Detroit Phase I	2009	32	U .S. Detroit
10	GM Detroit Phase II	2012	5	U.S. Detroit
11	GM India	2011	8	India Talagon
12	GM Uzbekistan	2012	9	Uzbekistan
13	BMW Brilliance Auto Phase I	2014	15	China
14	AGCO Changzhou	2014	30	China
15	GM Mexico	2014	1	Mexico SLP
15	GM Korea	2014	4	Korea Inchon
16	SANDISK	2014	3	China
17	GM Uzbekistan	2014	2	Uzbekistan
18	BMW Brilliance Auto Phase II	2015	6	China
19	SANDISK	2015	59	China
20	Great wall motor	2015	6	Russia
21	Geely auto	2015	3	Belarus
		

SIASUN OVERSEAS PROJECTS

#	Overseas Customer	Remark	Project Location	Year of Contract	Equipment
1	BMW Brilliance		Shenyang engine plant, China	2015, 2016	ASRS & AGV & palletizing robot
2	Singapore Land Transport Authority - Downtown Line Metro Project	Singapore government organization, in control of Singapore metro	Singapore	2016	ASRS
3	Singapore Land Transport Authority - Tomson Line Metro Project	Singapore government organization, in control of Singapore metro	Singapore	2014	ASRS
4	Boysen	specialist for exhaust technology rank top 10 in the world for exhaust technology	Shenyang factory, China	2014	ASRS
5	Wm. Wringly Jr. Company	the leader in cofections	Guangzhou Plant, China	2013	ASRS
6	Li-ion Technologies Limited. (Liotech Ltd)		Novisibirsk, Russia	2011	ASRS
7	Aurobindo Pharma Ltd. - Unit 3	founded in 1986, listed company Top 5 pharma in India	Hyderabad, India	2008, 2010, 2011	ASRS
8	Aurobindo Pharma Ltd - Unit 7(Phase I & II)				
9	Aurobindo Pharma Ltd - Unit 7 - Refiting, change straight aisle to curving aisle				
10	Bengal Textiles Company (Phase I)		Bengal	2008, 2009	ASRS
11	Bengal Textiles Company (Phase II)				

Intelligent Logistics

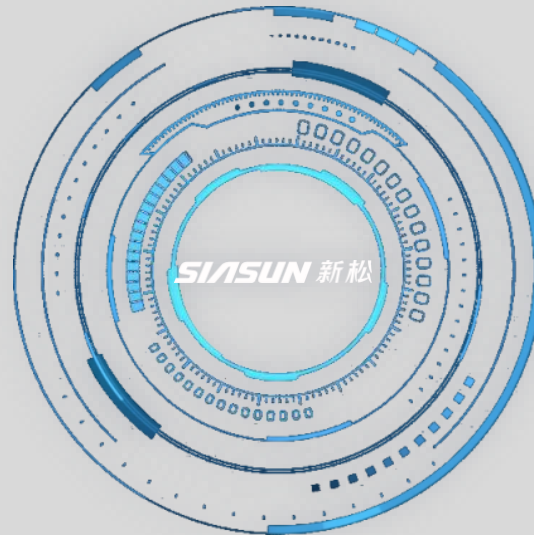
12	Ford Motor Company		Chennai, India	2008, 2016	AGV
13	General Motors		Uzbekistan	2011, 2015	AGV
14	General Motors		Inchon, South Korea	2008, 2013	AGV
15	General Motors		Detriot, America	2009	AGV
16	General Motors		Oshawa plant, Canada	2007	AGV
17	General Motors		St. petersburg, Russia	2007	AGV
18	General Motors		Pune, India	2007	AGV
19	General Motors		Halol plant, India	2008	AGV
20	General Motors		Mexico	2007	AGV
21	Geely Auto		Berarus	2015	AGV

Intelligent Logistics

22	Chia Tai Group		Thailand	2016	Food Delivery Robot
23	Fujicon Engineering Pte		Singapore	2016	Food Delivery Robot
24	Mobot Pte. Ltd		Singapore	2015	Food Delivery Robot
25	Melbourne City Metro		Melbourne, Australia	2013	Metro Ticket selling machine
26	Inergy Automotive System (Thailand) Ltd.	under The Plastic Omnium Group focusing on plastic fuel system operations	Rayong, Thailand	2008, 2010	Automatic Assembly and Production Line
27	Legrand Electricity		France and Turkey founded in 1860	2007	Test Station

Beyond Expectation

Thank you!



Best Regards!

SIASUN Robot & Automation CO., Ltd
<http://www.siasun.com>